

Cancer Research Postbac (CRP) Program Pre-Application Webinar

Emily Davis, PhD

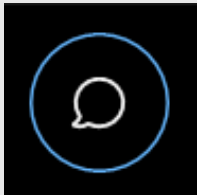
Program Manager | Intramural Diversity Workforce Branch

Monday, December 11, 2023, 4-5pm ET

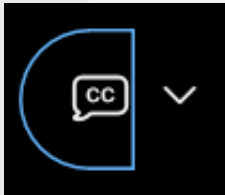
Housekeeping

Icons in WebEx window

Chat



Closed Captioning



- Webinar will be recorded
 - Recording posted at:
<https://www.cancer.gov/grants-training/training/idwb/cancer-research-postbac-program>
- Submit questions via chat
- Closed captioning available
- For audio/visual support:
 - Direct message Abel Varghese via chat
 - Contact via phone (240) 276-6369

Overview

1. Who We Are
 - The National Institutes of Health (NIH)
 - The National Cancer Institute (NCI)
2. What We Do
 - Cancer Research with a Purpose
 - Expanding the Cancer Research Workforce
3. How We Do It
 - The Cancer Research Postbac (CRP) Program
 - Additional Resources and Amenities
 - How to Apply
4. Time for Questions

Who We Are

*National Institutes of Health (NIH) and
National Cancer Institute (NCI)*

- Mission:
 - Seek fundamental knowledge about the nature and behavior of living systems and the application of that knowledge to enhance health, lengthen life, and reduce illness and disability
 - ~75% of budget provides **extramural** grant funding
 - **Intramural** = NIH onsite research





National Institutes of Health
Turning Discovery Into Health

OD

27 INSTITUTES & CENTERS



 = Extramural Only

NIH NATIONAL CANCER INSTITUTE

- Government's principal agency for cancer research and training
- Advancing scientific knowledge to help all people live longer, healthier lives
- 3 campuses:



NIH Main Campus
Bethesda, MD



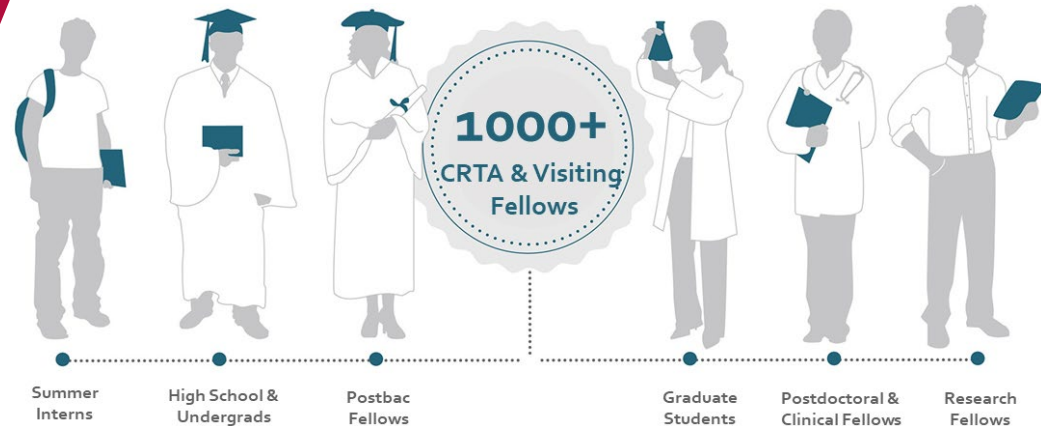
Frederick National Laboratory
for Cancer Research
Frederick, MD



Shady Grove
Rockville, MD

What We Do

*Cancer Research with a Purpose and
Expanding the Cancer Research Workforce*



Overview of What We Do at NCI



Fund and support cancer research institutions and scientists

Conduct cutting-edge research on cancer causes, treatments, and prevention

Train next generation of cancer researchers

Inform and educate about cancer

Cancer Research with a Purpose

- Pursue most important problems
- Take risks
- Tackle difficult problems requiring longer time window
- Share developed technology widely
- Research full spectrum from basic science to patient care



Addressing Cancer Health Disparities & Expanding the Cancer Research Workforce

Enhancing Research to
Address **Cancer Health
Disparities**

Ensuring **Diversity of
Thought and
Background** in the
Cancer Research
Workforce

Promoting an **Inclusive
and Equitable
Community** at NCI

Why Train at NCI

1

Largest biomedical and cancer research organization in the world

2

Partnerships

3

Build your professional network

4

Commitment to diversity & inclusion

5

Competitive funding

6

Hands-on learning

7

Mentorship

8

Sense of community

9

Career exploration

10

A holistic perspective to training



How We Do It

*The Cancer Research Postbac (CRP) Program,
Additional Resources & Amenities,
and How to Apply*

Pathways to Obtaining a Training Opportunity at NCI



Contact investigator directly



Submit your CV/resume to the NIH or NCI postbac database



Apply to open fellowship postings



Apply to a specific program within a specific timeline

The Cancer Research Postbac (CRP) Program

What It Is and Why You Should Do It

Overview of the Cancer Research Postbac (CRP) Program

- Up to **2-year postbac fellowship**
- Conduct cancer research at NCI
- Cohort based program
- Additional career and professional development provided



Stipends & Benefits Offered by CRP



- Competitive Stipend
 - \$41,700 – \$54,900 for 2023, dependent on prior experience
- Health insurance provided
- 12 federal holidays off + 20 additional days, per year
- Up to \$3000 for relocation expenses
- Travel stipend available

Why Choose CRP for a Postbac?

- Cohort community
- Professional development opportunities:
 - Research project
 - Mentoring
 - Training, courses, and workshops
 - Participate in journal clubs, branch meetings, and present at NIH Postbac Poster Day
- Highly collaborative environment





“I joined the program because I desired to join a collaborative community [...] who could help me develop professionally and personally on my journey toward becoming a physician-scientist. The program has provided innumerable resources...”

Deanna Riley, CRP Fellow



“I applied to the program to explore my research without the resource limitations that I faced in my undergraduate studies. I knew that joining the program would expose me to innovative cancer biology techniques, allow me to be trained by expert scientists, and give me time to develop my career.”

Julie Lee, CRP Fellow

Available Resources and Amenities

Across NCI and the NIH

Available Resources

- Mental health and well-being
- Career exploration
- Professional skill development
- Networking and community building




<https://ors.od.nih.gov>

Program Services

Amenities

-  Food
-  Interpreting
-  Fitness & Wellbeing
-  Banking
-  Child & Family
-  Retail

Transportation

-  Shuttles
-  Parking
-  Transshare
-  Patient Services
-  Bike Programs
-  Commuter Info

How to Apply

Eligibility Criteria

- ✓ U.S. citizen or permanent resident
- ✓ Received bachelor's degree less than 2 years prior
- ✓ GPA 3.2 or higher
- ✓ Demonstrate research experience
- ✓ Available 1-2 years, beginning by August 1st
- ✓ Pass federal background check



Application Materials – Information to Provide

- Apply by **January 17, 2024**
- Must provide:
 - Basic Information – name, contact info, citizenship, etc.
 - Demographic Information – sex, race, ethnicity
 - Education – degrees awarded or expected
 - Research Interests
 - References – name and email of **two references**
 - References letters due **January 24, 2024**



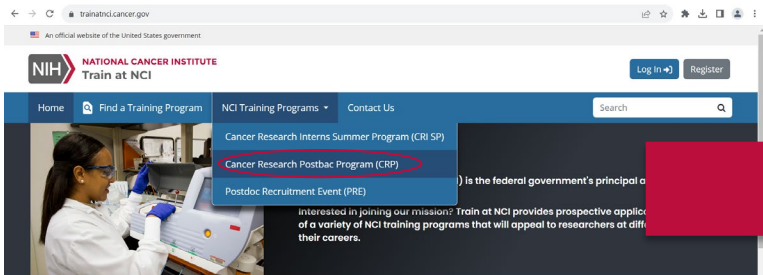
Application Materials – Documents to Upload

- Must apply by **January 17, 2024**
- Upload following documents:
 1. Curriculum Vitae (CV)
 2. Personal Statement 300 words or less
 3. Diversity Statement 250 words or less
 4. Transcripts





CRP Application Due January 17, 2024



Why Train at NCI?

NCI conducts research across the cancer care continuum to advance scientific knowledge and help people live longer, healthier lives. At our Bethesda, Shady Grove, and Frederick campuses, you will find leading experts in basic, clinical, translational, or genomic and population-based research. In addition to working side-by-side with world-class scientists, you will find extensive professional career and development opportunities, fellow-led groups that build a sense of community, and access to additional training, courses, and workshops to facilitate your project and career goals.

Train at NCI Portal

Submit and manage your application(s) in the portal.

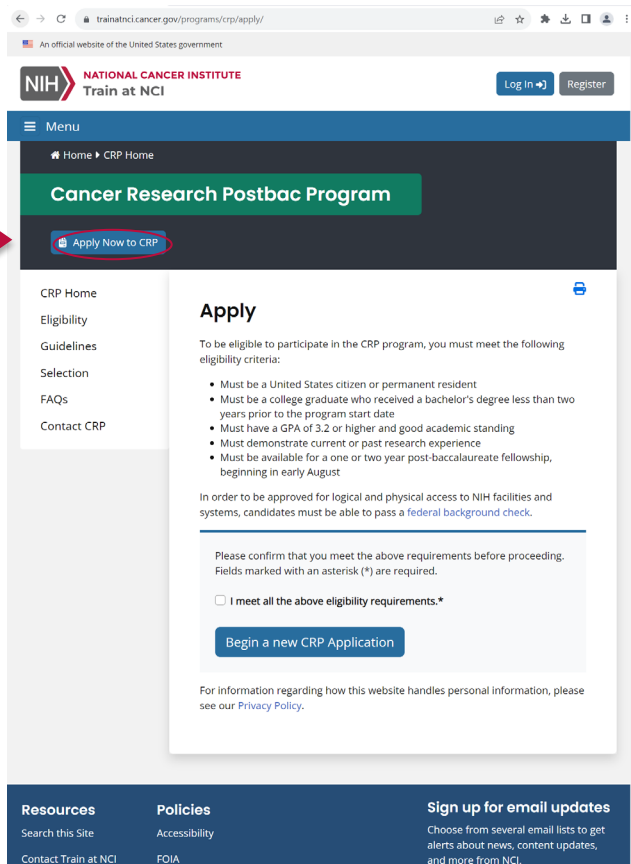
Login or register for an account to begin.

[Log In](#)

NCI and NIH Training Programs



[\(https://trainatnci.cancer.gov/\)](https://trainatnci.cancer.gov/)



How to Apply – Login.gov

trainatnci.cancer.gov/login/?next=/programs/crp/apply/#

An official website of the United States government

NIH NATIONAL CANCER INSTITUTE Train at NCI

Home Find a Training Program Search

You must log in to access this page.

In order to submit and manage your application, you must log in. If you already have an account with us, you can log in with:

- Log in.gov - Used by applicants.
- NIH Login Service - Used by NIH staff.
- IMS Employee Login - Used by IMS staff.

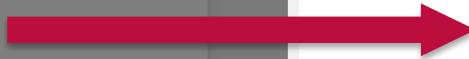
If you do not have credentials at any of these services, you may register for a new account. If you need assistance, please Contact Us.

System Use Notice

- This warning banner provides privacy and security notices consistent with applicable federal laws, directives, and other federal guidance for accessing this Government system, which includes (1) this computer network, (2) all computers connected to this network, and (3) all devices and storage media attached to this network or to a computer on this network.
- This system is provided for Government-authorized use only.
- Unauthorized or improper use of this system is prohibited and may result in disciplinary action and/or civil and criminal penalties.

Cancel Accept

Resources Policies Sign up for email updates



An official website of the United States government Here's how you know

LOGIN.GOV

Sign in Create an account

Sign in for existing users

Email address

Password

Show password

Sign in

[Sign in with your government employee ID](#)

[Forgot your password?](#)

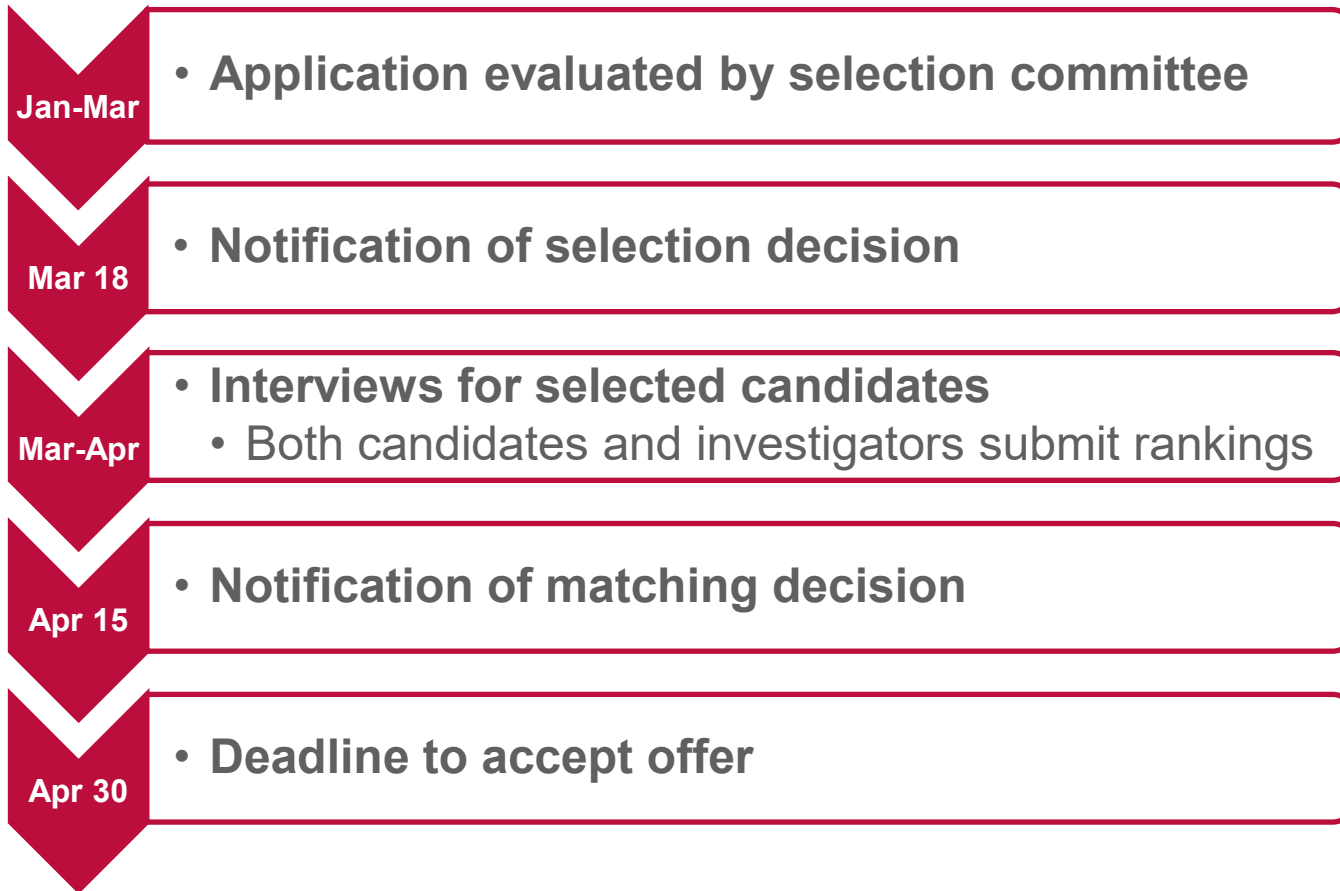
[Security Practices and Privacy Act Statement](#)

[Privacy Act Statement](#)

US General Services Administration Language Help Contact Privacy & security



Selection Process Timeline





Learn more here



**NATIONAL
CANCER
INSTITUTE**

ncicrp@nih.gov

www.cancer.gov

www.cancer.gov/espanol