



Center for
Scientific Review

Navigating Peer Review

Jessica Smith, PhD

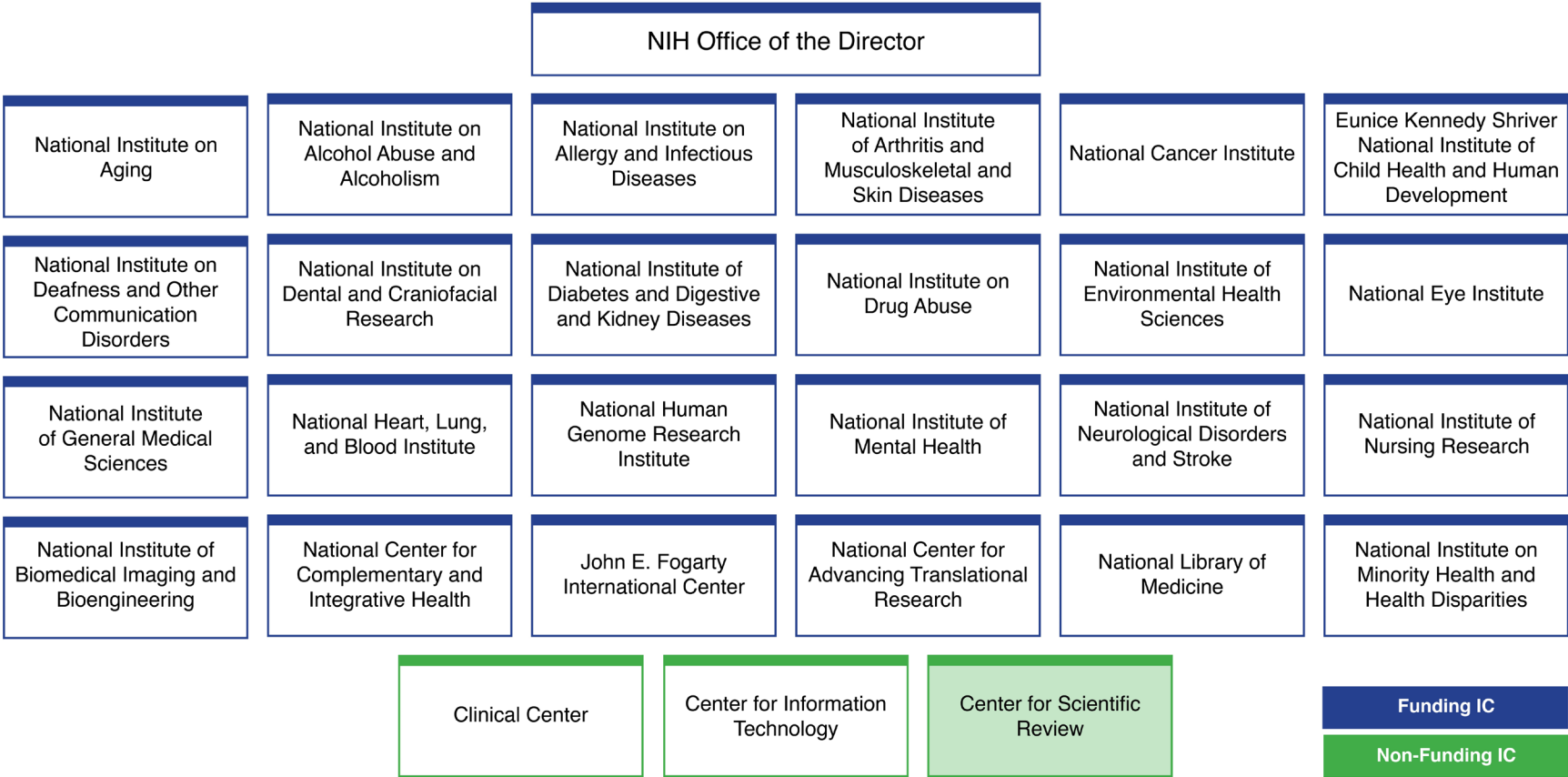
Scientific Review Officer, Referral Officer

jessica.smith6@nih.gov

June 28, 2024



Your Application Could Be Funded by One of 24 NIH Institutes or Centers (ICs)



CSR is the Gateway for NIH Grant Applications

The Center for Scientific Review (CSR) receives all NIH grant applications

Assigns applications to one or more NIH institutes or centers for potential funding

Assigns applications to CSR or NIH institute review groups

Conducts initial scientific merit review of most NIH research applications
(76% of all NIH grant applications = ~61,000 applications a year)

NIH's Two-Stage System of Peer Review



Evaluation of **scientific merit**



*R15 Review Process
we are here*

Review of first-level peer review outcomes, **recommendation for funding**, advice on programmatic priorities

R15: AREA versus REAP Programs

Academic Research Enhancement Award (AREA)	Research Enhancement Award Program (REAP)
Undergraduate-Focused Institutions	Health Professional and Graduate Schools
<p>Award baccalaureate science degrees</p> <p>Research team must be primarily composed of undergraduate students.</p> <p>PAR 24-214 and PAR-24-152 (clinical trials)</p>	<p>Award baccalaureate or advanced degrees in health professions.</p> <p>Research team must be composed primarily of health professional, undergraduate and/or graduate students (any combination).</p> <p>PAR-22-060 and PAR-21-357 (clinical trials)</p>

R15 Program Goals – Critical for Overall Impact Score

1. Provide support for **meritorious research** at undergraduate-focused, graduate or health professional institutions or institutional components.
2. **Strengthen the research environment** at these institutions (that have not been major recipients of NIH funding).
3. Give **students an opportunity to gain significant research experience** through active involvement in the research.

<https://grants.nih.gov/grants/funding/r15.htm>

R15: Five Review Criteria with Unique Emphasis

Significance

Does this project address an important problem or barrier in the field?

- Is the prior research that serves as the key support for the proposed project rigorous?
 - Foundation for the proposed research should be established using preliminary data (if available) and/or published data.
 - **Preliminary data are not required** but may be included if available.
- Will the data be publishable, disseminated and important to the field?
- Will students be exposed to research? Will it strengthen the research environment at the institution?

Investigator

Innovation

Are the PD(s)/PI(s), collaborators, and other researchers well suited to the project?

- Experience in supervising and engaging students in research.
- Appropriate scientific experience and training.
- Does the application take advantage of, challenge or build on current research concepts and models or research techniques?
- Propose innovative approaches to engaging students in research.

Environment

Are the institutional support, equipment and other physical resources available to the investigators adequate for the project proposed?

- Address availability of students to participate
- Evidence of student pursuit of biomedical science careers
- Demonstrate the PI has sufficient time and support to conduct the project

Budget and Budget Justification

Total budget for all years requested in Budget Period 1.

- Direct costs of \$250,000 or less → use the Modular Budget.
- Direct costs of \$250,001 - \$375,000 → use the R&R Budget.

Collaborators or Consultants:

- Names, organizational affiliations, and the services they will perform

Students:

- Indicate aspects of the proposed research in which students will participate
- If participating students have not yet been individually identified, the number and academic level of those to be involved should be provided
- Must be compensated for their participation in the lab's research
 - At least minimum wage for undergrads
 - Compensation through course credit hours towards graduation is permitted but must be justified

How will students be involved?

May include:

- Participation in the design of experiments and controls
- Collection and analysis of data
- Execution and troubleshooting of experiments
- Participation in research meetings
- Discussion of future directions

Desirable to include student dissemination of research at meetings or involvement in written publications. See the funding announcement for more information.

Collaborators

- Are allowed - **BUT be mindful of the intent and unique goals of the R15:**
 - Strengthening the research environment of eligible institutions
 - Engaging students from eligible institutions in research
 - Majority of research should be directed by PI at grantee institution
- Collaborators can add expertise and opportunities for student engagement, but the PI needs to be selective

Who can answer your questions?

Before you submit your application

- A program officer (PO) at an NIH institute or center
- Scientific review officer (SRO)
- CSR Division of Receipt and Referral (csrdrr@mail.nih.gov)

After you submit

- Your SRO
- CSR Division of Receipt and Referral (csrdrr@mail.nih.gov)

After your review and release of summary statement

- Your assigned PO

Grants Info

GrantsInfo@od.nih.gov – 301 945-7573

Serve on a Review Panel

- Early career scientists can enroll in CSR's **Early Career Reviewer (ECR) Program**.
- ECR's serve one time and review two applications as Reviewer 3.
- Check <https://public.csr.nih.gov/ForReviewers/BecomeAReviewer/ECR> for qualifications and enrollment process.



ECR Qualifications

Employment You have at least 2 years of experience as a fulltime faculty member or researcher in a similar role. Post-doctoral fellows are not eligible. You must be an Assistant Professor or in an equivalent role. Because the program is focused on early career scientists, Associate Professors are not eligible.	Grant & Review History You have not served on an NIH study section in any capacity aside from as a mail reviewer. (Mail reviews do not include participation in the meeting.) You have not held an R01 or R01-equivalent (R35, R37, RF1, R23, R29, DP1, DP2, DP5, U01, RL1) grant in the PD/PI role
Research You show evidence of an active, independent research program. Examples include publications, presentations, institutional research support, patents, acting as supervisor of student projects. You have at least 1 senior-authored research publication in a peer-reviewed journal in the last 2 years plus at least 1 additional senior-authored research publication since receiving a doctorate. <ul style="list-style-type: none">• In press publications are considered: preprints are not.• We consider "senior author" as single author.	 You must have submitted a grant proposal, in the PI/PD role, to the NIH and received the associated summary statement; any grant mechanism that results in a summary statement other than F30, F31, F32 fulfills this requirement.

- Aimed at early career, independent scientists – postdocs are not eligible and tenured professors are not eligible
- Review experience and successful competition for an R01 or equivalent are disqualifiers.

Important R15 Review Websites

NIH Research Enhancement Award (R15)

<https://grants.nih.gov/grants/funding/r15.htm>

FAQ – AREA and REAP

<https://grants.nih.gov/faqs#/Research-Enhancement-Award-R15.htm>

Questions?

Extra slides

R15 Program Features and Eligibility

Program Features:

- Research grant mechanism (not a training grant!)
- Maximum 3-year project period
- Up to \$375,000 direct cost over 3 years
- Grants are renewable

Organization Eligibility Requirements:

- To be eligible, institutions must award baccalaureate science degrees (AREA) or baccalaureate or advanced degrees in health professions or biomedical and behavioral sciences (REAP).
- Institution must have received no more than \$6 million dollars per year of NIH support (in both direct and F&A/indirect costs) in 4 of the last 7 fiscal years.
- Provost must submit letter stating eligibility.

R15 Eligibility (continued)

PD/PI Eligibility Requirements:

- Each PI (including MPIs) must have a primary appointment at an eligible institution.
- Each PI may not be the PI of an active NIH research grant, including another R15 grant, at the time of award, (but may be Key Personnel for an active NIH grant held by another PI).
- PIs may not be awarded more than one R15 grant at a time, although they may hold successive new or renewal grants.

R15

vs.

R01

Impact: Publishable, disseminated, and important scientific contribution to the research field(s) involved	Impact: A sustained, powerful influence on the research field(s) involved
Scope: Could be limited due to limitations of facilities and personnel Publications: Could be less impactful	Scope: Broader, could extend across one or multiple fields Publications: Expected strong and high-impact publications
Must describe research opportunities for students	Not relevant
Must describe how the award will strengthen the research environment of the institution	Not relevant