

AACR American Association
for Cancer Research®

ANNUAL MEETING
2024 • SAN DIEGO



APRIL 5-10
#AACR24
AACR.ORG/AACR24



Overview of NCI Grants Process and Policy Updates

Shannon K. Hughes, Ph.D.
Deputy Director, Division of Cancer Biology
NCI/NIH
Email: shannon.hughes@nih.gov

Disclosure Information

I am a full-time U.S. government employee.

I have no financial relationships to disclose.

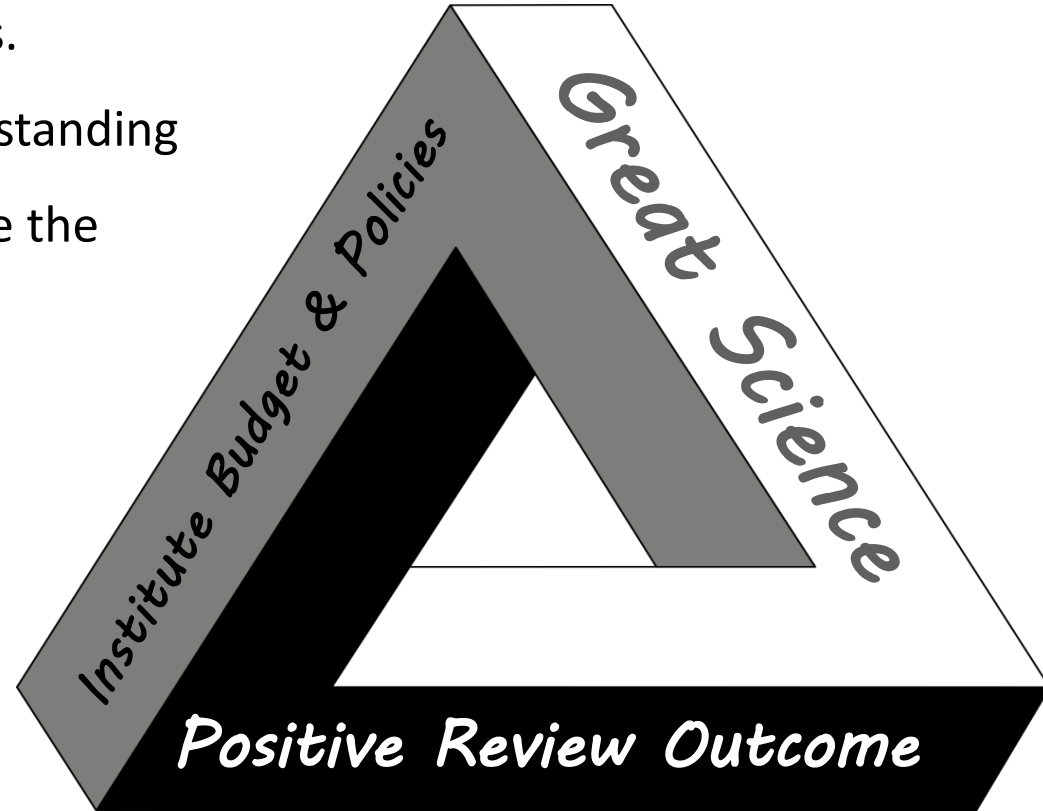


There is no secret formula

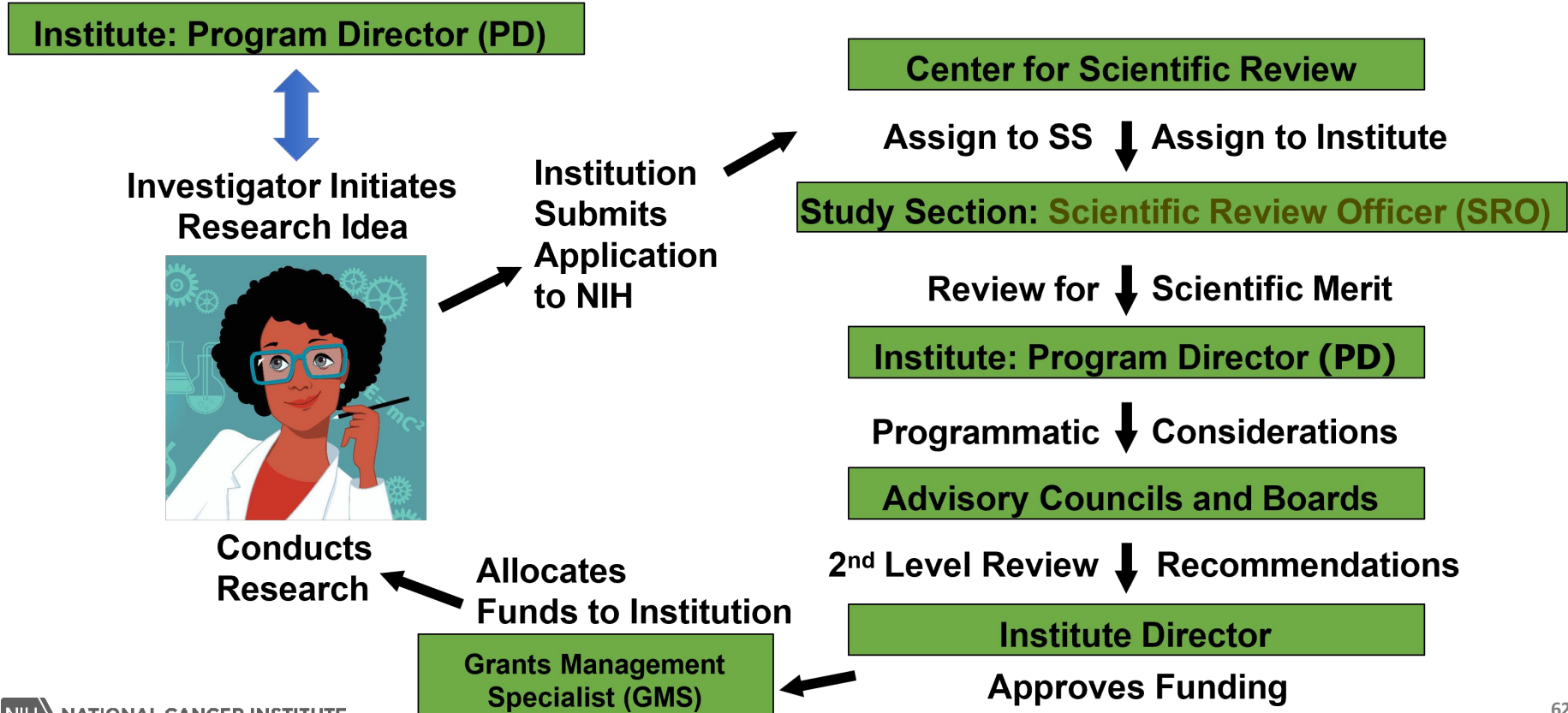
No formula for guaranteed success.

Developing good habits and understanding the grant process can help increase the likelihood of success.

Our goal today is to help you understand the process and provide useful resources.



Grants Process Overview: Who you might talk to *and when*



Tips for finding a Program Officer:

Ask your mentor or peers who have submitted applications for names.

Use NIH RePORT to find applications similar to yours and look for the PO.



report.nih.gov

Matchmaker

Enter abstracts or other scientific text and Matchmaker will return lists of similar projects from RePORTER or program officials associated with those projects. These matches are based on the terms and concepts used in the submitted text. Matchmaker summarizes the projects by the program official, institute or center, review panel, and activity code.

Find a Match



RePORTER



Matchmaker



Awards by Location



Categorical Spending



NIH Data Book

Tips for finding a Program Officer:

Ask your mentor or peers who have submitted applications for names.
Check out NCI Division, Office, and Center websites for staff information.

[Home](#) > [About NCI](#) > [NCI Organization](#)

- DCB**
- Research Portfolio >
- Research Programs >
- Funding >
- Researcher Resources
- News & Events >
- About DCB >
- Progress >

Tumor Metastasis Branch

The Tumor Metastasis Branch plans, develops and directs the Division's research program in tumor metastasis, focusing on mechanisms of metastasis and metastatic niches, circulating tumor cells, dormancy, and angiogenesis and vasculogenesis.

More information on research supported by this branch is available in the [Research section](#).

Phone: (240) 276-6220

Fax: (240) 276-7866

Name & Position	Email	Areas of Expertise
Joanna Watson, Ph.D. <i>Chief</i>	watsonjo@mail.nih.gov	Circadian rhythms, cancer cachexia, circulating tumor cell biology, and mechanisms of metastasis
Grace Ault, Ph.D.	aultg@mail.nih.gov	Cell invasion and migration, epithelial-mesenchymal transition,

Characteristics of a strong NCI application

- Strong significance, with human cancer relevance
- High potential impact
- High novelty and innovation
- Strong track record of applicant
- **Clear rationale**
- **Relevant, supportive preliminary data**
- **Clear, focused approach** that should lead to unambiguous results
 - Tip: Test your hypotheses
- **Careful attention to details**



Which funding mechanism is right for you?

R01 vs. R21 vs. R03 vs. P01, etc.

Have I talked
to an NCI
Program
Director?



My ESI window is
closing. Which
mechanisms are
best to get
maximum benefit
?

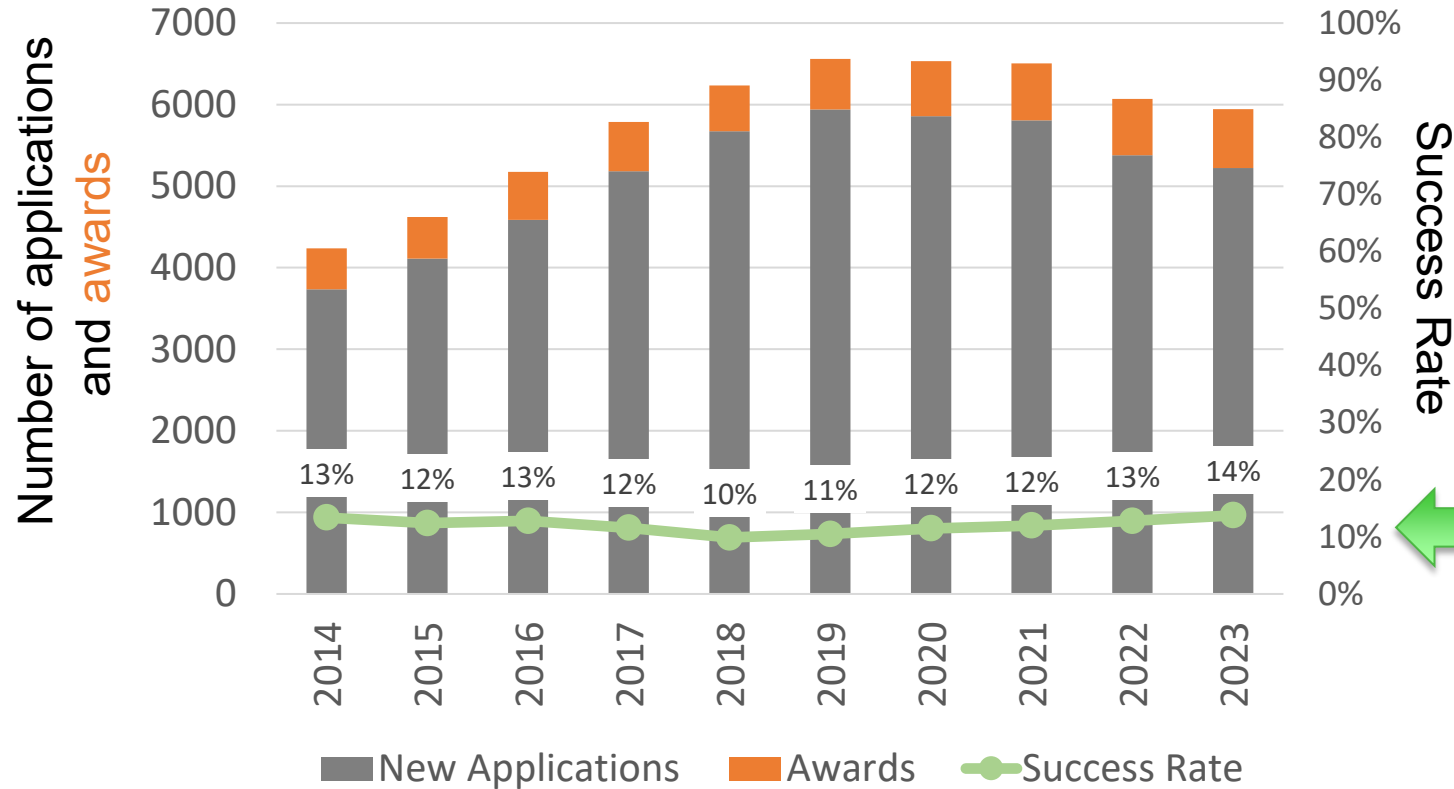
What are the
current NCI
pay lines?

How much **time**
and **budget** is
needed to
effectively address
my hypothesis?

How much
preliminary
data do I
have to
support the
premise?

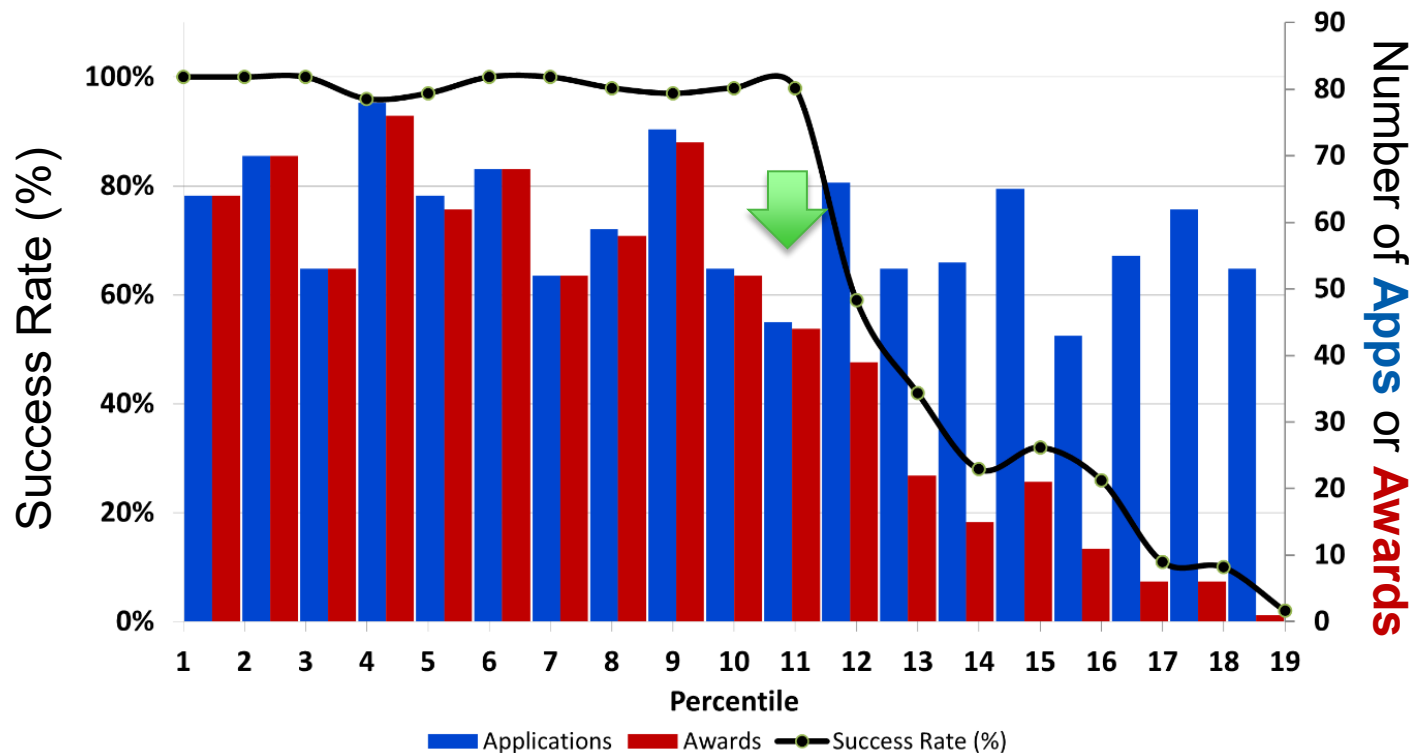
Does my institution
offer pilot funding
that would be more
appropriate for this
proposal?

NCI R01 Funding Trends (new applications): PA-20-183, PA-20-184, PA-20-185



← Current FY24
R01 Payline
10th Percentile

Applications are often supported beyond the NCI “payline”: ex. FY22 R01s



Data: https://gsspubssl.nci.nih.gov/blog/articles?funding_patterns/awards_of_r01_and_r21_grants_in_fy_2021
Select Pay considerations: <https://deainfo.nci.nih.gov/grantspolicies/NCI-select-pay.pdf>

NCI R21 Funding Trends (new apps):

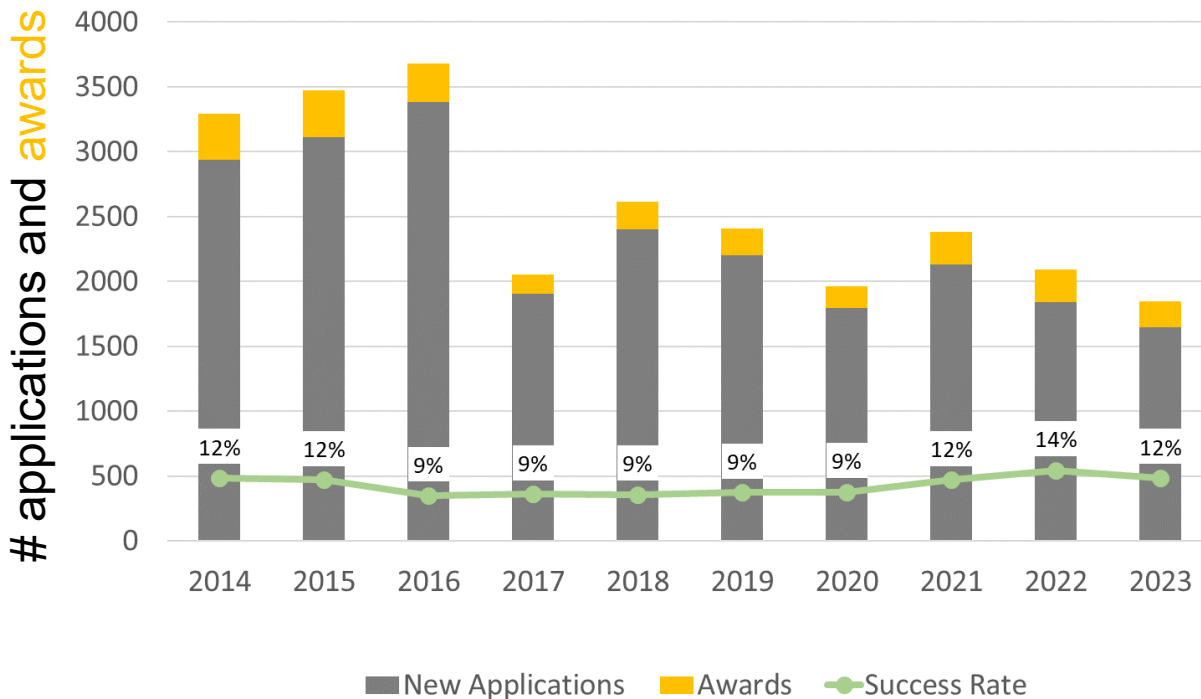
Must be in response to a specific NOFO

Exploratory Cancer
Immunology Projects
and Technologies
NOT-CA-24-016



Current FY24
R21 Payline
10th Percentile

Success Rate



Myths about the R21 mechanism

Myth 1: New or early-stage investigators should use an R21 to establish a research career

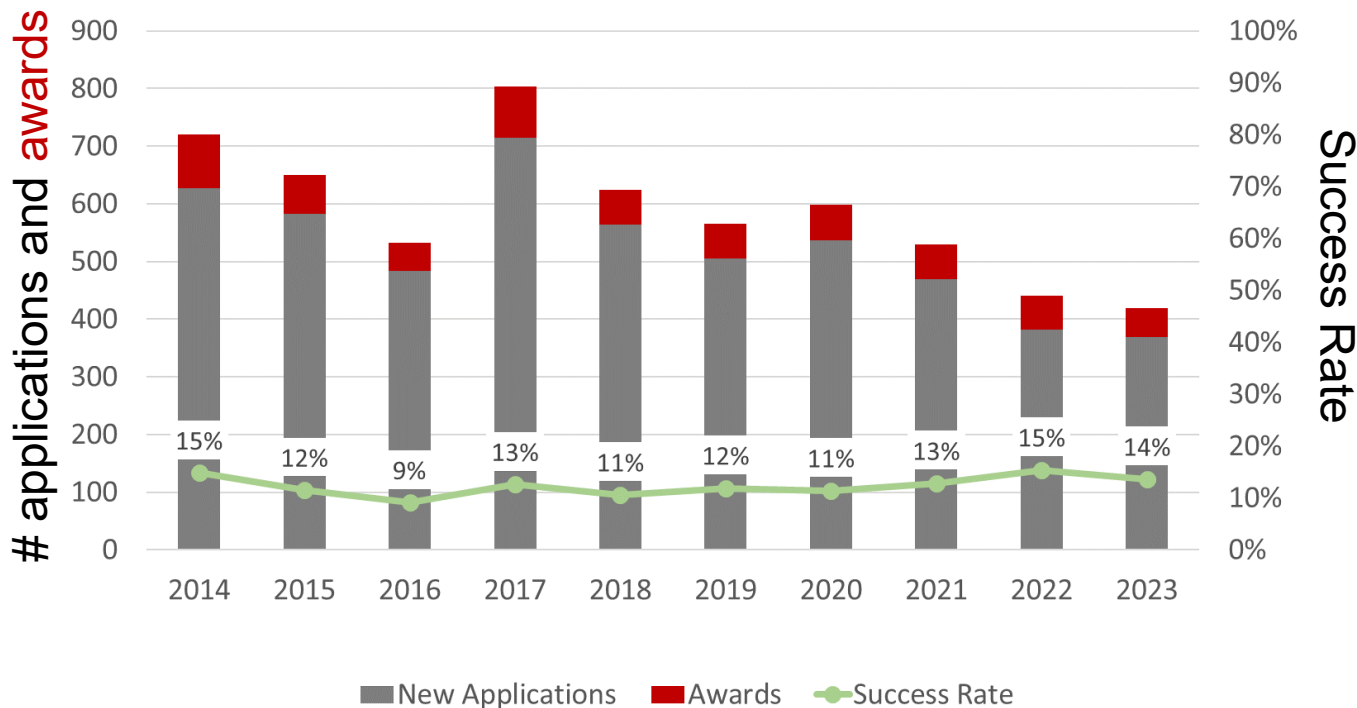
- Never the intended use
- Different NIH funding institutes use the R21 in distinct ways
- No consideration of career stage in funding decisions

Myth 2: R21 is less competitive than an R01; it's just a small R01 without preliminary data

- Very competitive, award rates are not higher than R01
- More than 98% of successful R21 applications include some preliminary data.
 - Don't confuse "not required" with "not desired"

NCI R03 Funding Trends (new apps):

<https://grants.nih.gov/grants/guide/pa-files/PAR-23-058.html>



Current FY23
R03 Payline
Impact Score = 25

Success Rate

“The R03 grant mechanism supports **pilot and feasibility studies**; **secondary analysis of existing data**; small, self-contained research projects; development of research methodology; and development of new research technology.”

Thoughts about R01, R21, R03 mechanisms

- Do Not Use the R03 and R21 mechanisms as “mini-R01” applications.
- ***Do Use the R03 and R21 mechanisms to ask an important, clearly defined research question, relevant to the Funding Opportunity.***
- Regardless of mechanism, convince the reviewers that you are uniquely poised to accomplish what you propose
- Stress your related experience with various elements of the proposal, your productivity, and your collaborators’ experience
- Highlight your contributions to the topic through publications and abstracts
- Present evidence of feasibility (true for all mechanisms)
- Present a balanced knowledge of the literature
- Acknowledge the weaknesses and opportunities

NCI Full Year FY24 Funding Policy

- R01: 10th Percentile (Established / New Investigators)
- R01: 17th Percentile (Early-Stage Investigators)
- R21: 10th Percentile
- R15: 25 Impact Score
- R03: 25 Impact Score

- Non-competing (Type 5) awards funded at 95%*
(*some exceptions, ex. NRSA, Career, R13, R50 see website)

UPDATE



<https://deainfo.nci.nih.gov/grantspolicies/interimfundltr.htm>

Support for collaborative and team science

NCI Encourages More Collaborative Research to Accelerate Cancer Science

[Subscribe](#)

April 13, 2023, by Drs. Phil Castle, Jim Doroshow, Dan Gallahan, Katrina Goddard, and Toby Hecht

In this issue of the NCI Bottom Line blog, read why NCI leaders are encouraging investigators to apply for a program project (P01) grant. P01 grants involve the type of broad, multidisciplinary collaboration likely to yield meaningful results for cancer science and patients.



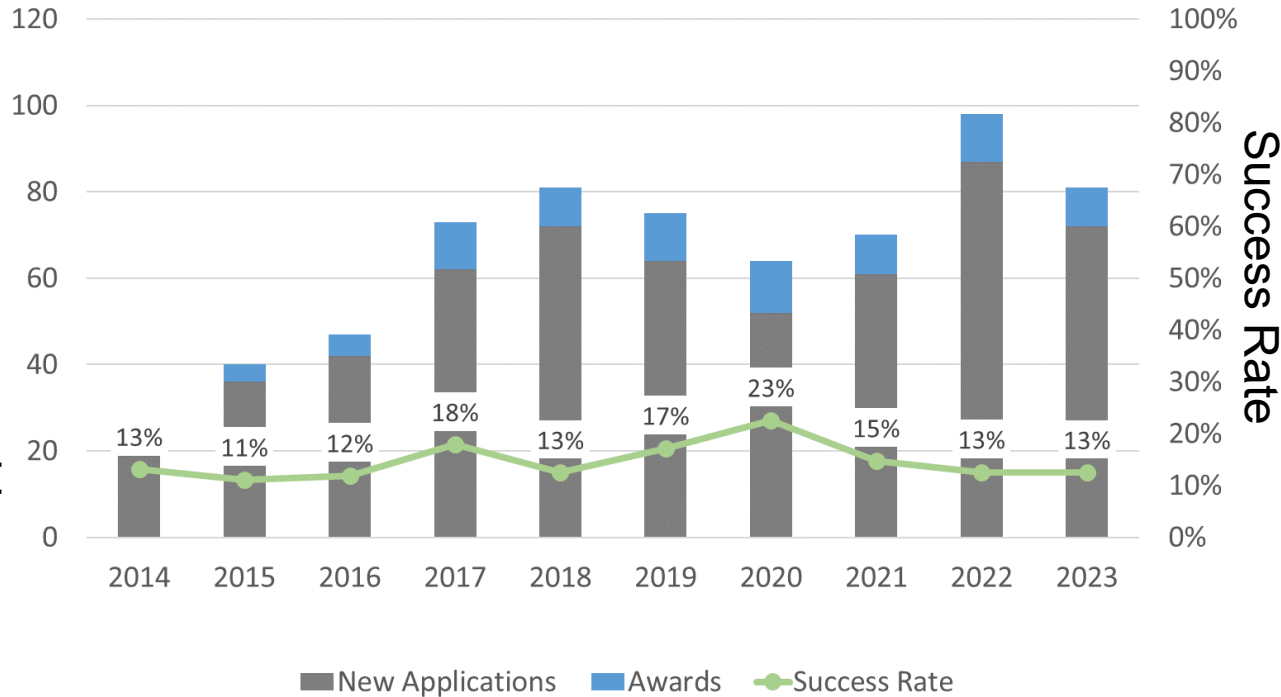
Subscribe to the
NCI Bottom
Line blog:



Trends in NCI P01 Funding (new apps)

<https://grants.nih.gov/grants/guide/pa-files/PAR-20-077.html>

applications and awards



Success Rate

P01s support and sustain team science approaches across the cancer continuum

Required letter of intent to submit a budget >\$500K Direct Cost

Strongly recommended pre-submission interaction with NCI Program Staff

Source: NIH RePORT; Table 206: <https://report.nih.gov/reportweb/web/displayreport?rId=565>



NIH Data Management & Sharing Policy

Session PO.RSP01.01 - Regulatory Science and Policy

920 / 3 - Insights from the National Cancer Institute's request for information on existing data sharing processes for NIH-funded research

📅 April 7, 2024, 1:30 PM - 5:00 PM

Planning & Budgeting for Data Management & Sharing

Prospectively planning for how scientific data will be managed and ultimately shared is a crucial first step in optimizing the reach of data generated from NIH-funded research. Investigators and institutions are encouraged to consider these crucial elements early in research planning.

i Tip: Consider consulting institutional resources such as librarians and data managers to help plan effectively!

Submission & Review of DMS plans

Applicants planning to generate scientific data will submit DMS Plans to NIH as part of the funding application or proposal. Note that plans are NOT part of scored peer review criteria unless specifically noted in the funding opportunity. NIH Program Staff oversee reviewing and approving Plans prior to award.



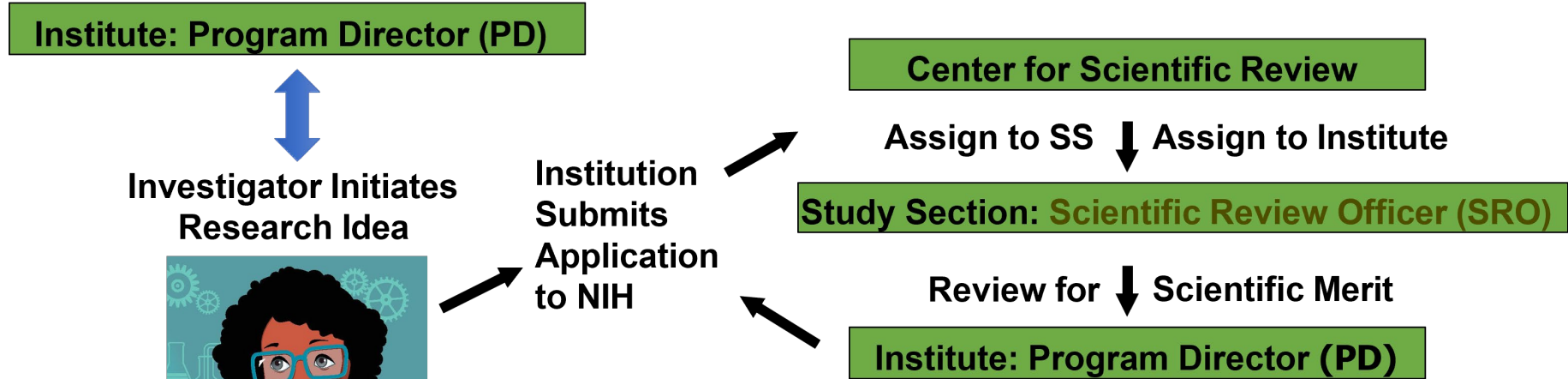
Implementing DMS Plans

Awardees are expected to carry out data management and sharing as outlined in approved plans and as a term and condition of award.

<https://sharing.nih.gov/>

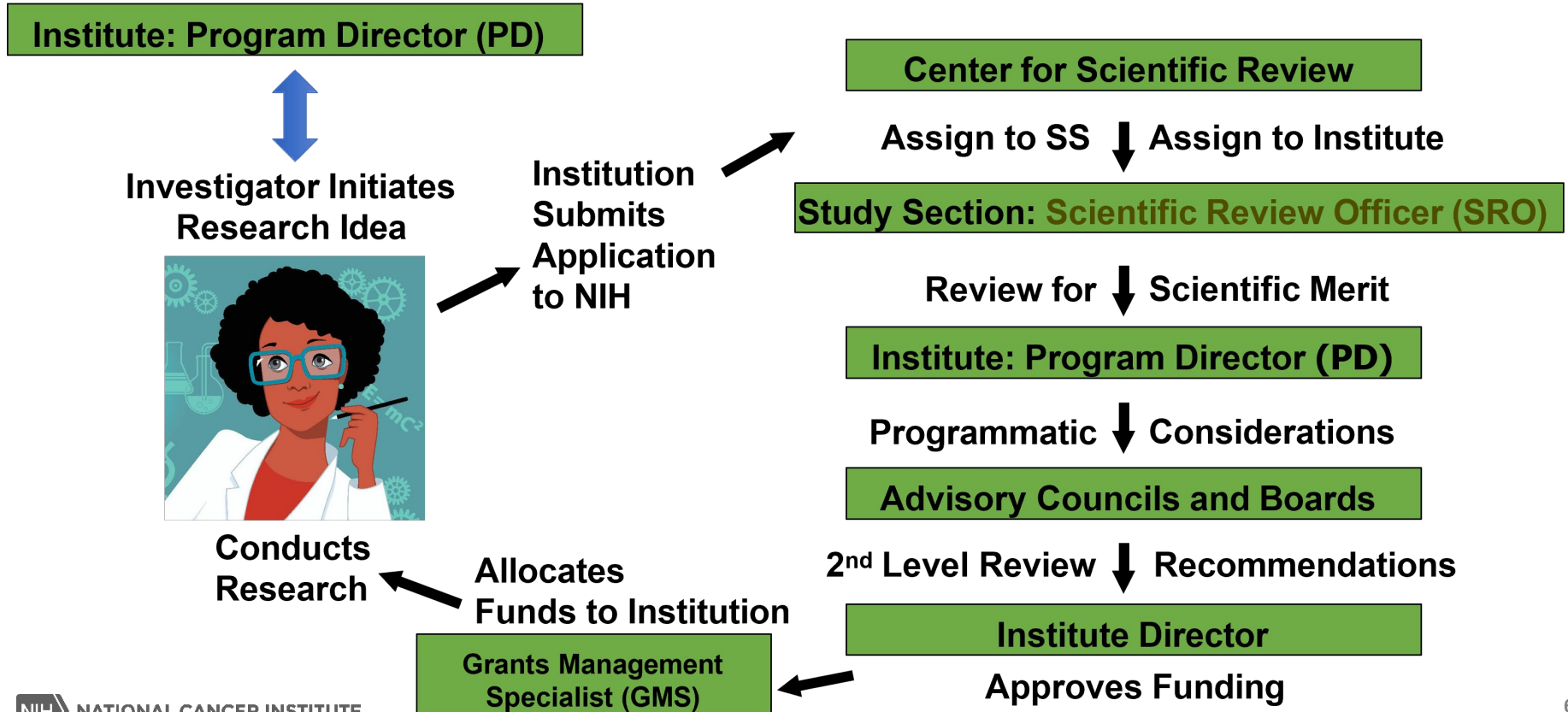
Visit Dr. Korrapati at the DCB desk in the NCI Booth!

Grants Process Overview: Who you might talk to *and when*



When you receive your summary statement, the assigned Program Director can help to contextualize the comments that you receive (even if Not Discussed).

Grants Process Overview: Who you might talk to *and when*



How to find NCI funding announcements

- NIH Guide for Grants and Contracts
 - <https://grants.nih.gov/funding/searchguide/index.html#/>
 - Subscribe to the Weekly NIH Funding Opportunities and Notices listserv
 - <https://grants.nih.gov/grants/guide/listserv.htm>
- Check Institute websites
 - <https://www.cancer.gov/about-nci/organization/dcb/funding/opportunities>
- Contact NIH Program Staff

NIH Guide
Listserv



DCB Funding Opportunities

Funding Opportunity Announcements (FOA)

Title	Announcement Number	Opening Date
Notice of Special Interest (NOSI): Research on the Etiology, Early Detection, Screening and Prevention of Early-Onset Colorectal Cancer	NOT-CA-23-018	02/05/2023
Request for Information on Existing Data Sharing Processes for NIH-Funded Research	NOT-CA-23-023	02/02/2023
Adaptive Biomaterials for Cancer Biology	NOT-CA-23-030	01/10/2023
MPS-NCI Supporting new Areas of Knowledge (SPARK): Cancer as a Living Material - New Ideas and New Connection	NSF 23-09 (NSF Dear Colleague	01/03/2023

NCI Early Investigator Advancement Program

The EIAP Aims to Facilitate the Advancement of Scientists from Diverse Backgrounds:

- Enhance professional skills;
- Guide preparation of an R01 grant application;
- Provide access to a mentoring and peer network; and
- Grow a community of emerging independent investigators from diverse backgrounds.

Stay tuned for the FY25 cohort announcement!



<https://www.cancer.gov/about-nci/organization/crchd/diversity-training/eiap>

Consider volunteering as an EIAP Mentor!



Becoming a mentor of one of these young investigators may be of a significant impact on them and cancer research.



Your expertise would be invaluable for the EIAP scholars.

Your insights and tips on career development would complement the resources and activities provided by the EIAP program.

Volunteer mentor expectations:

- Meet with EIAP scholar monthly (virtually or in person, if possible);
- Attend a mentor training session; and
- Participate in conversations with EIAP program staff related to the mentoring experience

Contact: Jay Revilleza (mariajamele.revilleza@nih.gov)

Additional Opportunities to Learn about NIH and NCI Resources

SESSION NIH03 - Cancer Health Disparities Research Collaborations Across CRCHD and DCB

📅 April 7, 2024, 4:00 PM - 5:00 PM

📍 Room 2 - Upp



Basic Research in Cancer Health Disparities

Tiffany Wallace, PhD

Program Director

Disparities and Equity Program

Center to Reduce Cancer Health Disparities (CRCHD)



Integrating Health Disparities into Immuno-Oncology

Lillian Kuo, PhD

Program Director

Cancer Immunology, Hematology, and Etiology Branch

Division of Cancer Biology (DCB)



Administrative Supplements to Support Cancer Disparity Collaborative Research

LeeAnn Bailey, MBBS, PhD

Chief- Integrated Networks Branch

Center to Reduce Cancer Health Disparities (CRCHD)

Apr 8 2024 1:30PM

▶ NIH06. NCI Funding Opportunities and Grant Writing Strategies for New and Early-Stage Investigators

Room 2 - Upper Level - Convention Center

Apr 9 2024 4:00PM

▶ NIH11. NCI Division of Cancer Prevention Research Resources, Funding Opportunities, and Research Workforce Activities

Room 2 - Upper Level - Convention Center

Apr 10 2024 10:15AM

▶ NIH12. NCI Artificial Intelligence (AI) Programs and Resources for Advancing Cancer Research

Room 2 - Upper Level - Convention Center



**NATIONAL
CANCER
INSTITUTE**

www.cancer.gov

www.cancer.gov/espanol