

Advancing the Science of Health Disparities

Division of Cancer Biology
New Grantee Workshop

Tiffany A. Wallace, PhD
NCI Center to Reduce Cancer Health Disparities
January 9, 2025

Cancer Disparities

- Adverse differences between population groups in cancer measures, such as: incidence, prevalence, morbidity, mortality, survivorship and quality of life, burden of cancer or related health conditions, screening rates, and stage at diagnosis.
- Focus on population groups that have systematically experienced greater obstacles to health based on numerous characteristics.

Contributors to Cancer Disparities

*The causes of health disparities
are multifactorial, inter-related
and complex.*

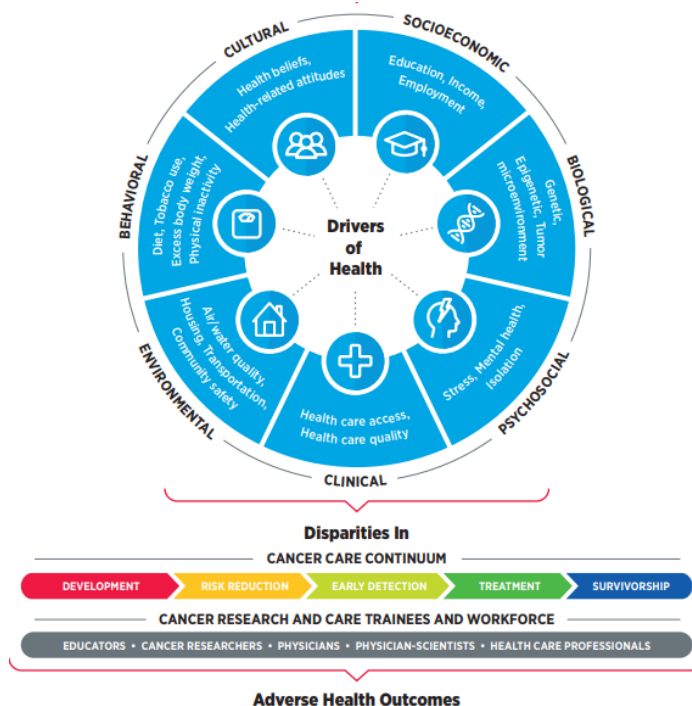
Research Initiatives for Disparities Research Span Numerous Disciplines

Basic Research

- Basic Research in Cancer Health Disparities (R21, R01)
PAR-25-243, PAR-25-244

Translational/Clinical Research

- NCI Clinical and Translational Exploratory/ Developmental Studies (R21)
PAR-25-139



Social Science

- Social Determinants of Health and Quality of Care Contributors to Cancer Disparities in People with HIV (U01, **pending**)

Transdisciplinary and Multidisciplinary Research

- Admin Supplements to Support Cancer Disparity Collaborative Research
PAR-22-114

Basic Research in Cancer Health Disparities Program

- **PAR-25-243 (R01), PAR-25-244 (R21)**
- **Supports research within Division of Cancer Biology (DCB), Division of Cancer Prevention (DCP), and CRCHD**
- **Purpose:** Support innovative basic research investigating the biological and genetic contributions of cancer disparities.
- **Projects may seek to:**
 - Investigate mechanistic studies of biological factors associated with cancer disparities
 - Develop and test new methodologies and models
 - Conduct secondary data analyses
- **Last submission dates in July 2028**

Funded Portfolio Facts:

- Breast and prostate cancer represent ~58% of awards
- Biological consequences of social determinants of health increasing area of interest.

Contact

Tiffany Wallace, Ph.D.

Tiffany.Wallace@nih.gov

NCI Clinical and Translational Exploratory/ Developmental Studies

- **PAR-22-216 (R21)**
- **Supports research within the Division of Cancer Treatment and Diagnosis (DCTD), Division of Prevention (DCP), and CRCHD**
- **Purpose:** Support preclinical and early phase clinical research directly related to advancements in cancer treatment, diagnosis, prevention, comparative oncology, symptom management, or reduction of cancer disparities
- **Projects may propose:**
 - Clinical studies
 - Correlative Studies/Biomarker Development
 - Target and Agent Development
 - Model Development and Analysis
- **Last submission date: July 01, 2025**

Contact for disparity research

Tiffany Wallace, Ph.D.

Tiffany.Wallace@nih.gov

Stay Connected

Have questions?

Tiffany.Wallace@nih.gov



NCI Center to Reduce Cancer Health Disparities (CRCHD)



<https://crchd.cancer.gov>



ncicrhd@mail.nih.gov