

Diversity-Focused Training and Cancer Disparities Research Opportunities

Tiffany Wallace, PhD

Lead, Disparities and Equity Program

NCI Center to Reduce Cancer Health Disparities

Agenda

- 1. *CRCHD Mission and Priorities***
- 2. Training Opportunities*
- 3. Cancer Disparities Research Funding opportunities*

NCI Center to Reduce Cancer Health Disparities (CRCHD)

CRCHD Mission

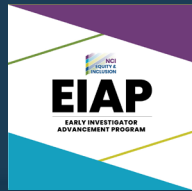
- Advance cancer disparities research across the entire cancer continuum.
- Advise on strategic planning and policies related to cancer disparities research and diversity training.
- Lead NCI's efforts in increasing workforce diversity.

CRCHD Focus Areas

Diversity Training



Workforce Diversity

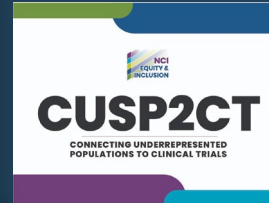


Partnerships

Partnership to Advance Cancer Health Equity (PACHE)



Networks



Disparities and Equity Program

Basic and translational research

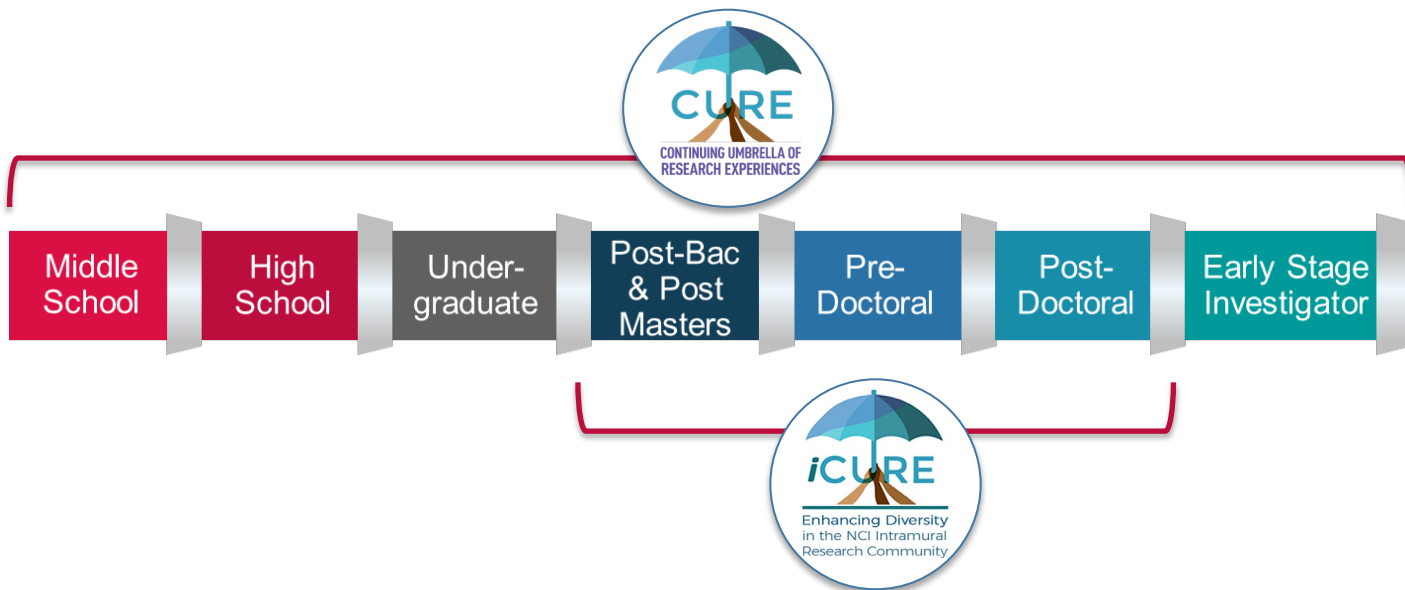


Agenda

1. *CRCHD Mission and Priorities*
2. ***Training Opportunities***
3. *Cancer Disparities Research Funding opportunities*

NCI Diversity-Focused Training Programs

Extramural: [Continuing Umbrella of Research Experiences \(CURE\)](#)



- **Support** research experiences of *underrepresented* students and scientists
- **Promote** professional and career development
- **Help** the trainees achieve research independence

Intramural: [Intramural Continuing Umbrella of Research Experiences \(iCURE\)](#)

CRCHD Programs Promote Diversity in Cancer Research Workforce

NCI particularly encourages applications from individuals from groups identified in NIH's Notice of Interest in Diversity ([NOT-OD-20-031](#)) and consistent with the applicable Federal, State, and Local laws.



Goal 8: Optimize the Workforce

The cancer care and research workforce is diverse, reflects the communities served, and meets the needs of all people with cancer and those at risk for cancer, ensuring they live longer and healthier lives

Extramural Funding Mechanisms (CURE)



Individual Awards



R	R
2	0
1	1



Institutional Awards



Diversity and Re-Entry/Re-Integration Supplements Overview

- Each supplement supports the research experience of one **identified** trainee
- Parent grant must have **at least two years** of active status at the time of supplement application; some exceptions are granted by CRCHD
- A **bridge** for candidates to progress to the next academic/career level
- **Application receipt: Oct 1 – Dec 1 and Feb 1 – Mar 31**

More Information	
Diversity Supplements	https://www.cancer.gov/about-nci/organization/crchd/diversity-training/cure#individuals
Diversity Supplements Guidelines	https://www.cancer.gov/about-nci/organization/crchd/diversity-training/cure/ds-guidelines.pdf

Contacts

Chantel Fuqua, PhD.

Belem López, PhD.

Fulera Salami, MPH.

CUREsupplements@nih.gov

Research Supplements to Promote Diversity in Health-Related Research ([PA-23-189](#))

- **Participant Eligibility:** U.S. citizens or permanent residents
- **Allowed one diversity supplement at each career level**



- **No concurrent PHS support at the time of application:**
 - Cannot be supported by parent grant
 - If coming off of institutional training grant, need letter from institution
- **AFTER application submission:**
 - Can be supported by the parent grant at the recipient's own risk, pending funding decision of supplement application

NCI Diversity Supplements Guidelines:

<http://www.cancer.gov/about-nci/organization/crchd/diversity-training/cure/DSGuidelines>

Notice of Special Interest (NOSI): Research Supplements to Promote Re-Entry and Re-integration into Health-Related Research Careers ([NOT-OD-21-134](#))

Aims to support candidates from all populations

Each eligible grant can support only one ReRi supplement at a time

Re-entry supplement:

Candidate must have been on hiatus from research for 1-8 years; must be postdoctoral fellow or faculty before hiatus



Re-integration supplement:

Individuals adversely affected by unsafe or discriminatory environments due to unlawful harassment who need to make a rapid transition



NCI Re-Entry and Re-integration Supplements Guidelines:

<https://www.cancer.gov/about-nci/organization/crchd/diversity-training/cure/reentry-supplements-guidelines>

What Do We Look for in a Supplement Application?

Candidate	Mentoring and Career Development Plan	Research Plan
<ul style="list-style-type: none">• Motivation• Accomplishments• Career goals• Eligibility and diversity statement	<ul style="list-style-type: none">• Scientific proficiency and mentoring expertise of mentor(s)• Defined role(s) and commitment of mentor(s)• Training of career skills• Clear benchmarks• Candidate-specific plans• Future grant submission	<ul style="list-style-type: none">• Relevancy to Parent Grant project• Scientific impact on Parent Grant project• Research design and feasibility• Alignment with candidate's career goals

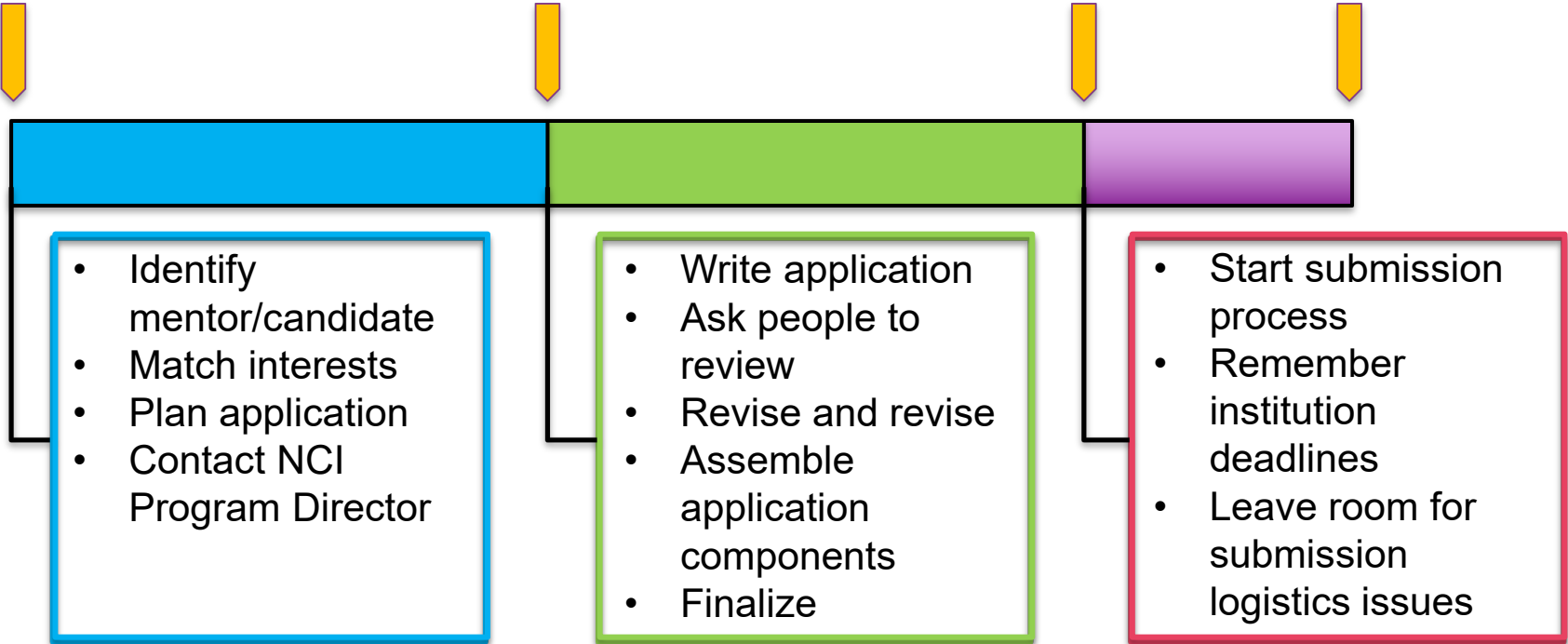
Suggested Timeline for Preparing a Supplement Application

5 Months
Prior

3 Months
Prior

1 Month
Prior

Submission
Deadline



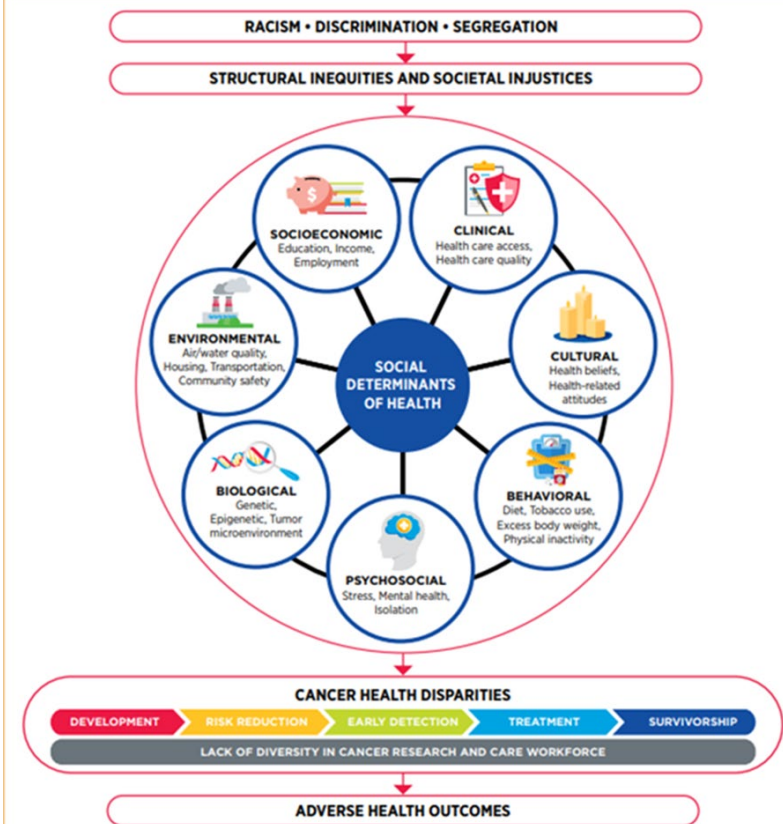
Agenda

1. *CRCHD Mission and Priorities*
2. *Training Opportunities*
3. ***Cancer Disparities Research Funding opportunities***

Contributors to Cancer Disparities

- The causes of health disparities are multifactorial, inter-related and complex
- *All directly influenced by structural and systemic racism.*

FIGURE 5 Why Do U.S. Cancer Health Disparities Exist?



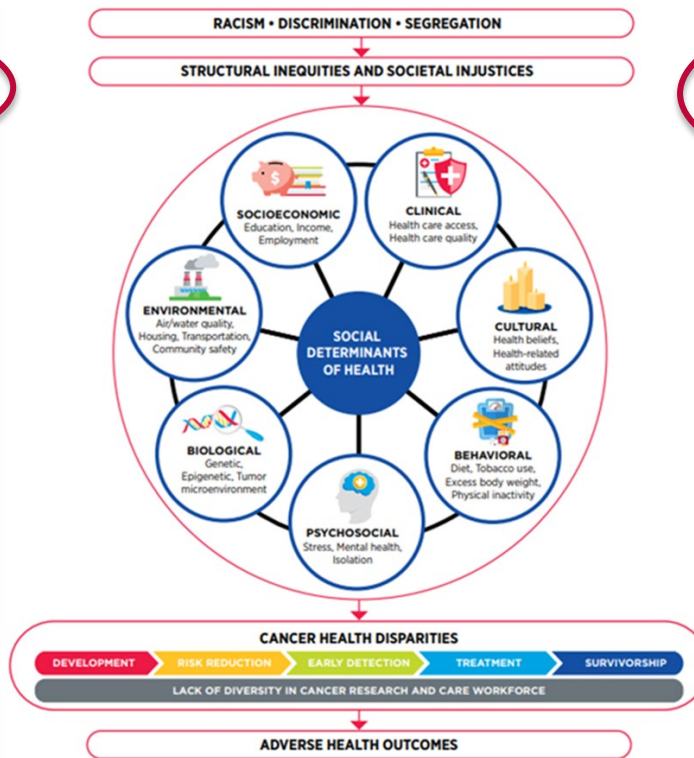
Research Initiatives for Disparities Research Span Numerous Disciplines

Basic Research

- Basic Research in Cancer Health Disparities (*R03, R21, R01*)
- Basic/Translational Research on Health Disparities in Underrepresented People Living with HIV (PLWH) and Cancer (*R21, R01*)

Social Science

- Admin Supplements Investigating how SDOH and Cancer Care Inequalities Contribute to Disparities in HIV-associated Cancers



Translational/Clinical Research

- NCI Clinical and Translational Exploratory/ Developmental Studies (*R21*)
- Specialized Programs of Research Excellence (SPOREs) (*P20, P50*)
- PDX Development and Trial Centers Research Network (PDXNet) (*U54, U24*)

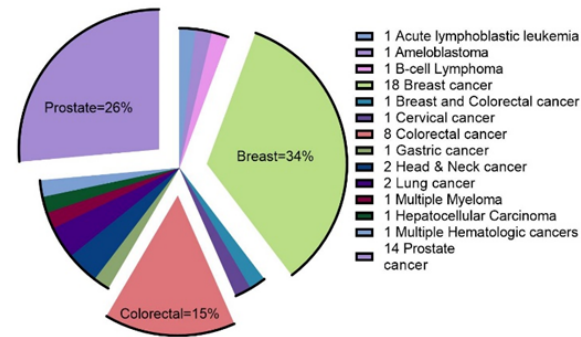
Transdisciplinary and Multidisciplinary Research

- Admin Supplements to Support Cancer Disparity Collaborative Research

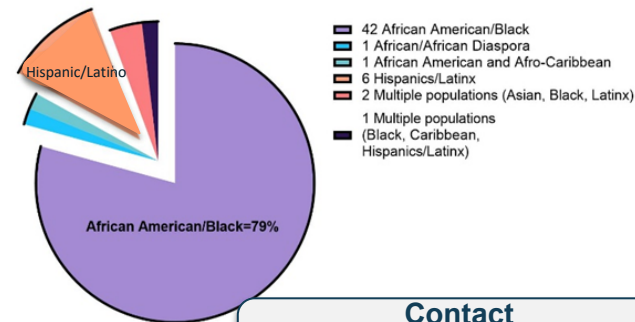
Basic Research in Cancer Health Disparities Program

- PAR-21-322 (R01), PAR-21-323 (R21), PAR-21-324 (R03)
- Supports research within Division of Cancer Biology (DCB), Division of Cancer Prevention (DCP), and CRCHD
- Purpose: Support innovative basic research investigating the biological and genetic contributions of cancer disparities.
- Projects may seek to:
 - Investigate mechanistic studies of biological factors associated with cancer disparities
 - Develop and test new methodologies and models
 - Conduct secondary data analyses
- Last submission dates in June and July, 2024

Cancer Categories (n=53) for Active Awards in FY2022



Populations Studied (n=53) Across Active FY22 Awards



Contact
Tiffany Wallace, Ph.D.
Tiffany.Wallace@nih.gov

NCI Clinical and Translational Exploratory/ Developmental Studies

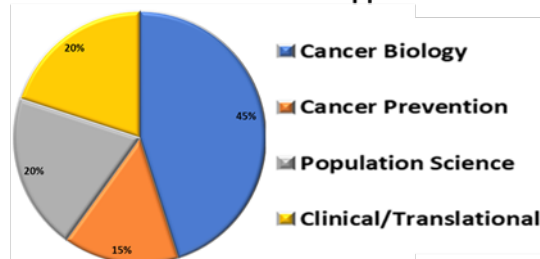
- **PAR-22-216 (R21)**
- **Supports research within the Division of Cancer Treatment and Diagnosis (DCTD), Division of Prevention (DCP), and CRCHD**
- **Purpose:** Support preclinical and early phase clinical research directly related to advancements in cancer treatment, diagnosis, prevention, comparative oncology, symptom management, or reduction of cancer disparities
- **Projects may propose:**
 - Clinical studies
 - Correlative Studies/Biomarker Development
 - Target and Agent Development
 - Model Development and Analysis
- **Last submission date: July 01, 2025**

Contact for disparity research
Tiffany Wallace, Ph.D.
Tiffany.Wallace@nih.gov

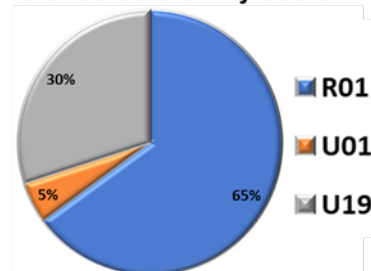
Admin Supplements to Support Cancer Disparity Collaborative Research

- **PAR-22-114**
- **Purpose:** To catalyze and broaden research and collaborations across the cancer disparity research spectrum
- **Primary Objectives**
 - Promote new cancer disparities research and collaborations
 - Envisioned to accelerate and strengthen multidisciplinary cancer disparities research
 - Increase the number and competitiveness of cancer disparity-related grant proposals submitted to the NCI
- **Last submission date:** January 23, 2025

Research Areas of Awarded Applications



Parent Grant Activity Codes



Contacts

Dr. Jay Revilleza
mrevilleza@nih.gov

Dr. Sarah Szurek
sarah.szurek@nih.gov

Stay Connected

Have questions?

Tiffany.Wallace@nih.gov

More information



@ncicrhd



NCI Center to Reduce Cancer
Health Disparities (CRCHD)



<http://crchd.cancer.gov>