



# Intramural Continuing Umbrella of Research Experiences (iCURE) Application Webinar

*Gregory Adams, Jr. PhD  
Program Director  
NCI Center to Reduce Cancer Health Disparities*

# Goals

1. *Become oriented with NCI, CURE and iCURE*
2. *Stating how CRCHD provides an Ecosystem of Support*
3. *Provide guidance of iCURE program expectations and experiences*
4. *Learn about the iCURE application cycle and how to apply*

# Meet the iCURE Program Team:

## [iCURE@nih.gov](mailto:iCURE@nih.gov)



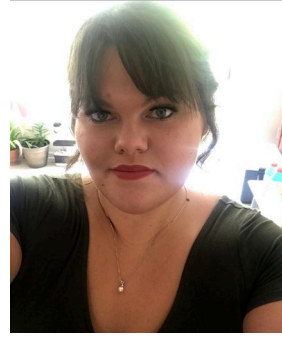
Dr. Jessica  
Calzola



Dr. Gregory  
Adams, Jr.



Dr. Shadab  
Hussain



Mrs. Katelyn  
Garfinkel



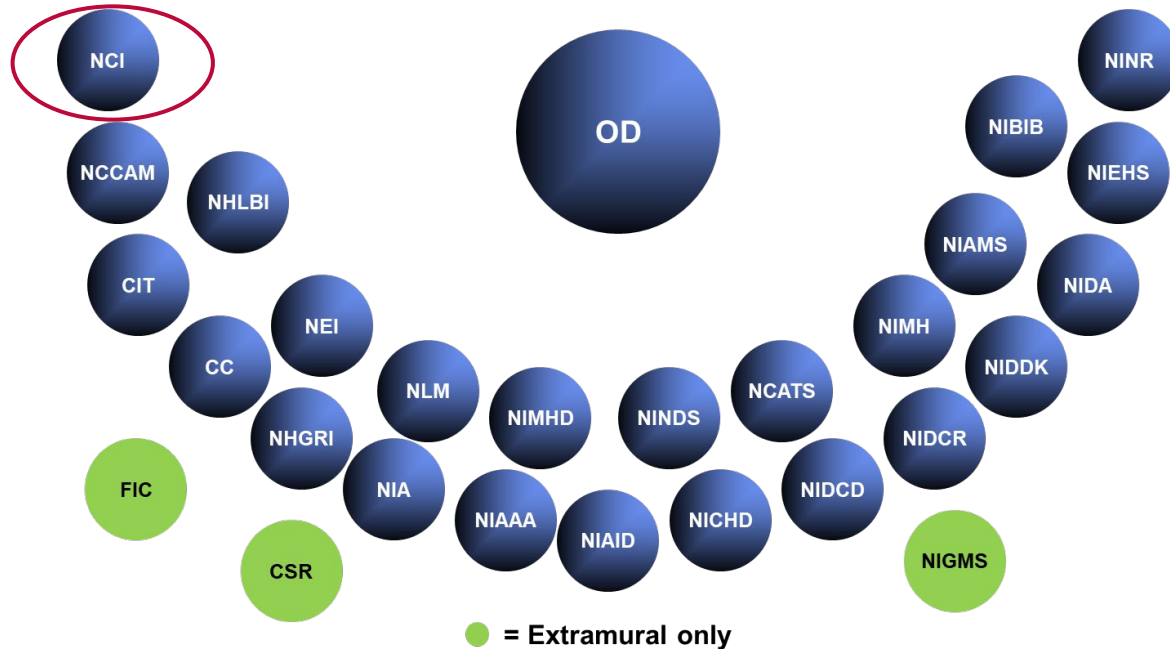
Mrs. Dawn  
Reid



Mrs. Fulera  
Salami



## National Institutes of Health Has 27 Institutes and Centers




# National Cancer Institute (NCI)



- Established in 1930
- NCI supports and improves cancer research
- Committed to Equity, Diversity and Inclusion

# National Cancer Institute (NCI)

**MAJOR NCI MILESTONES**



**1937**  
President Franklin D. Roosevelt signs legislation to establish NCI.

**1960**  
NCI begins funding government supported cancer centers.

**1973**  
NCI establishes its **Surveillance, Epidemiology, and End Results (SEER)** program to collect and analyze U.S. cancer incidence, survivorship, and mortality data.

**1982**  
**PDQ® (Physician Data Query)**, NCI's digital database for cancer information, becomes available nationwide.

**1996**  
NCI establishes its **Office of Cancer Survivorship** to study ways to enhance the length and quality of life for cancer survivors.

**2005**  
NCI and the National Human Genome Research Institute launch **The Cancer Genome Atlas (TCGA)** project to systematically explore the genomic changes involved in human cancer.

**2011**  
NCI establishes its **Center for Global Health** to advance global cancer research.

**2013**  
NCI launches the **RAS Initiative** to find ways to target the Family of RAS genes which are involved in many cancers.

**2015**  
**NCI-MATCH** trial for adults begins, testing therapies targeted to specific gene mutations regardless of cancer type. In 2017, a similar trial starts for children with cancer.

**2016**  
The **Cancer Moonshot** is launched to accelerate cancer research with the goal of making more therapies available to more patients, while also improving cancer prevention and early detection.

**2020**  
NCI launches the **Childhood Cancer Data Initiative** to collect, analyze, and share data to accelerate scientific discoveries for children, adolescents, and young adults with cancer.

**2021**  
The **NCI Equity and Inclusion Program** is launched to increase the diversity of the cancer research workforce, address cancer disparities, and advance health equity.

**1955**  
The **Clinical Trials Cooperative Group Program** begins testing anticancer agents identified in the NCI drug development program.

**1971**  
President Nixon signs the **National Cancer Act of 1971**, authorizing the NCI director to coordinate the National Cancer Program and establishing important entities of the program.

**1976**  
NCI's **Cancer Information Service (CIS) - CANCER** launches to provide the public with the latest and most accurate cancer information.

**1983**  
NCI launches the **Community Clinical Oncology Program (CCOP)** to link physicians with NCI-sponsored clinical trials.

**2000**  
NCI establishes the **Center to Reduce Cancer Health Disparities (CRCHD)** to address cancer in racial and ethnic communities.

**2006**  
NCI starts the **TARGET Initiative** to identify molecular characteristics of childhood cancers that can be used to design more effective treatments.

**2011**  
NCI launches its **Provocative Questions** project to stimulate research in important areas that have been understudied, neglected, paradoxical, or difficult to address.

**2014**  
NCI launches the **National Clinical Trials Network and NCI Community Oncology Research Program** to support cancer clinical trials at sites across the U.S. and Canada.

**2016**  
NCI launches the **Genomic Data Commons** to store, analyze, and distribute cancer genomic data to advance the molecular diagnosis of cancer and identify potential drug targets.

**2017**  
The **NCI Formulary** is created, providing certain NCI-funded investigators rapid access to pharmaceutical agents for preclinical studies and clinical trials.

**2020**  
NCI establishes the **Serological Sciences Network**, a collaborative effort to expand serology testing, develop serology assays, and understand the immune response to the virus that causes COVID-19.

**2023**  
NCI releases the **National Cancer Plan**.

## Mission:

- Lead, conduct and support cancer research across the nation to advance scientific knowledge and help all people live longer healthier lives.

## Organization:

- **Extramural:** support research across the nation
- **Intramural:** conduct research at NCI

**Website:** <https://www.cancer.gov/about-nci>

# National Cancer Institute (NCI)



- Nation's leader in cancer research funding
- Largest funder of cancer research in the world
- Supports 72 NCI-Designated Cancer Centers
- Supports training at all levels of career training

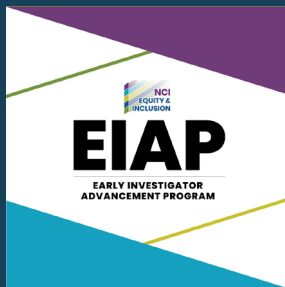
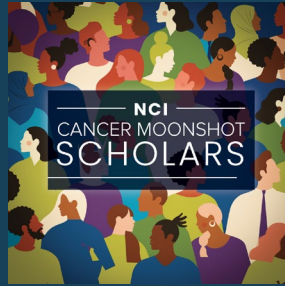


# NCI Center to Reduce Cancer Health Disparities (CRCHD)

## Diversity Training



## Workforce Diversity



## Partnerships

- Partnerships to Advance Cancer Health Equity (PACHE)

## Networks

- Connecting Underrepresented Populations to Clinical Trials (CUSP2CT)
- Transformative Educational Advancement and Mentoring Network (TEAM)

## Disparities and Equity Program

- Basic research
- Translational research
- Behavioral research
- DEIA

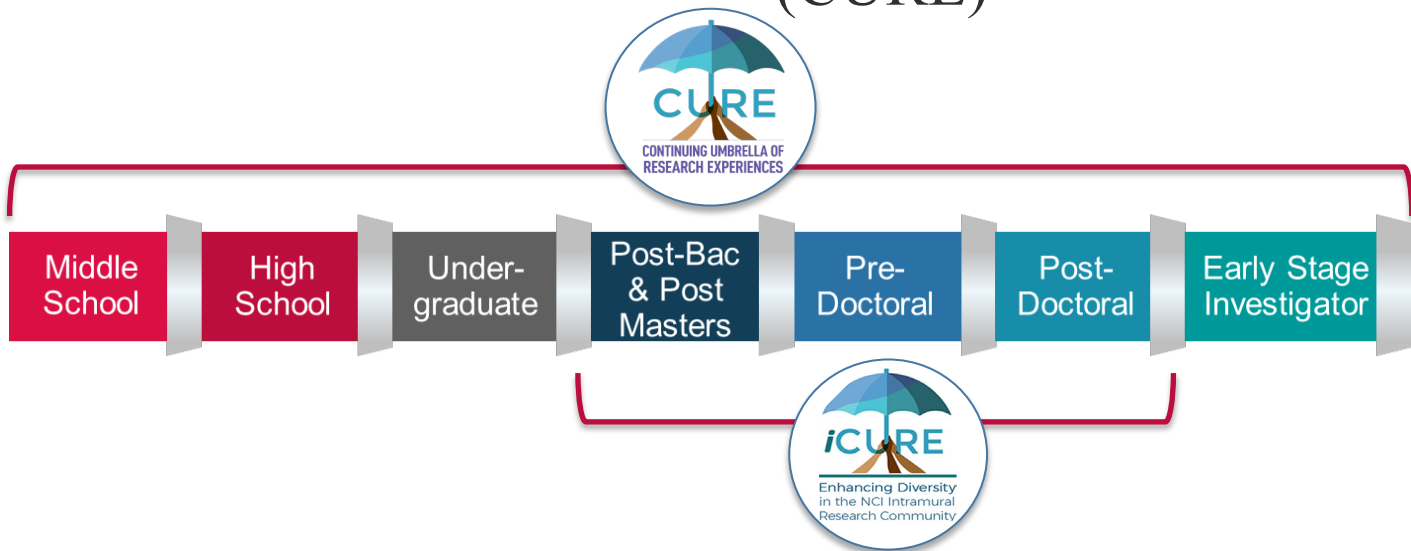




# NCI Diversity-Focused Training Programs



## Extramural: Continuing Umbrella of Research Experiences (CURE)



- Support research experiences of **underrepresented** scientists
- Promote professional and career development
- Help trainees achieve research independence

## Intramural: Intramural Continuing Umbrella of Research Experiences (iCURE)

# How does CURE and iCURE Provide an Ecosystem of Support?



# Intramural Continuing Umbrella of Research Experiences (iCURE)



## iCURE Goals:

- Enhance research workforce diversity at NCI
- Promote career advancement of scholars
- Foster an inclusive environment in the NCI intramural community



---

Enhancing Diversity  
in the NCI Intramural  
Research Community

# iCURE Supports Research Experiences at All Three Campuses of NCI in Maryland

- Mentored research experiences on **NCI campuses** in Bethesda, Shady Grove (Rockville) and Frederick, Maryland
- Supports **postbacs** (up to 2 years), **graduate students** (2 years) and **postdocs** (3 years)
- Centralized review and program-facilitated matches for scholars to NCI PIs; **applicants do not need to pre-identify a PI to apply**
- iCURE matches scholars to PIs in the Center for Cancer Research ([CCR](#)), Center for Global Health ([CGH](#))\*, Division of Cancer Epidemiology and Genetics ([DCEG](#)), and the Division of Cancer Control and Population Sciences ([DCCPS](#))\* *\*Can only accept postbacs or postdocs*

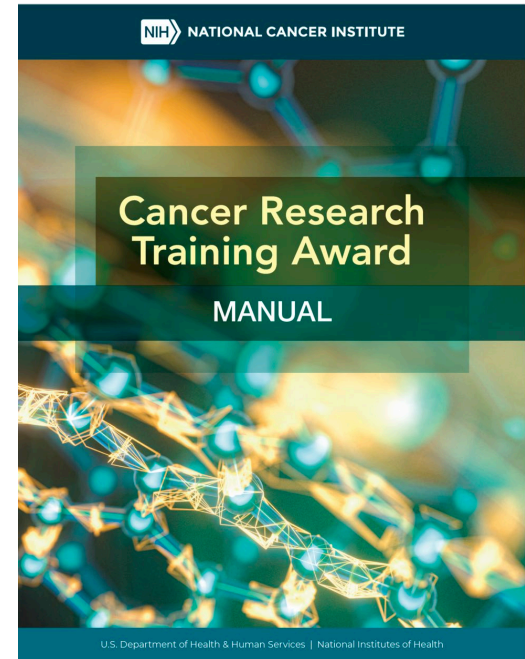




# iCURE Supports Research Experiences at All Three Campuses of NCI in Maryland

- Stipend paid monthly based on education level, GPA and relevant experience
- Health Insurance (at no cost to the scholar)
- Graduate student tuition
- Participation in [NIH Transhare Program](#)
- Support for training opportunities such as supplies, courses and conference attendance

Reference [Cancer Research Training Award Manual](#) (CRTA)





# Career Advancement Goals for iCURE Scholars



**Postbac/Post Masters:** up to 2 yrs of support

*Acceptance into a graduate programs, MD/PhD, MD, PharmD, etc., professional programs*



**Graduate Students:** up to 2 yrs of support

*Acquire PhD, publish, transition to postdoc, industry or investigator*



**Postdoctoral Fellows:** up to 3 yrs of support

*Publish, apply for grants, acquire skills for independence, transition to industry or investigator*



# iCURE Promotes Diversity in the Cancer Research Workforce



NCI values diversity and particularly encourages applications from individuals from diverse backgrounds, including those from groups underrepresented in the cancer research workforce, for example those from the groups noted in the Notice of NIH's Interest in Diversity ([NOT-OD-20-031](#)).

## Race/Ethnicity

- Blacks or African Americans
- Hispanics or Latinos
- American Indians or Alaskan Natives
- Native Hawaiians and other Pacific Islanders

## Disability

- Physical or mental impairment that substantially limits one or more major life activities

## Disadvantaged Background

- Homeless
- Foster care system
- First generation w/ Bachelor's degree
- Federal Pell Grants
- Special Supplemental Nutrition Program
- Rural or low income/access areas



# iCURE Program Experience and Benefits



## Support from iCURE Program Staff

- Individual/group check-ins
- Microsoft Teams
- Community Outreach opportunities
- Mentorship and Career Guidance
- Scholar of the Month

## iCURE Cohort Activities

- Journal Club
- iCURE Lunch and Learns
- iNET – connect with peers in other NIH institutes
- Other Gatherings

## Research

## Professional Development Activities

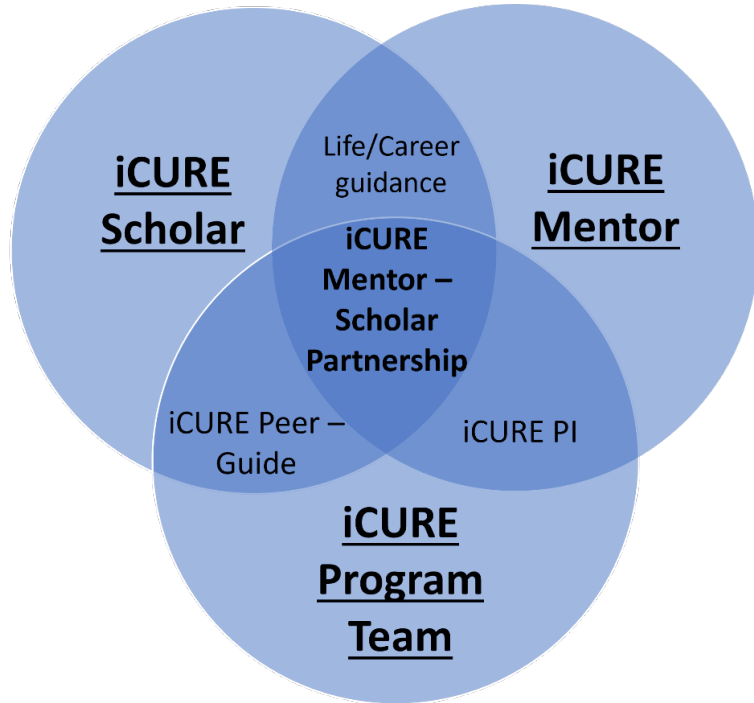
- CRCHD Professional Development Workshop
- Mentored Mock Review
- Scientific focus area units
- Skills/Professional development
- Networking Opportunities

## Mentoring Network

- Diverse perspectives
- Career and professional guidance
- Cultural and social support
- Peer mentorship
- iCURE Mentor – Scholar Partnership

# iCURE Mentor – Scholar Partnership

## Responsibilities and Expectations



- Take responsibility for your career
- Determine best communication method (i.e., phone, email, virtual, etc.,)
- Be available to meet at least **bi-monthly** with your iCURE Mentor
- Establish training goals and needs
- Be honest and candid with your matched mentor

# iCURE Eligibility



**iCURE scholars must be U.S. citizens, legal permanent residents, or non-citizen nationals**

- Non-citizen nationals – persons who are born in American Samoa or Swains Island

## Post-baccalaureate (Incl. Post Master's)

- Must meet both [Postbac IRTA](#) and iCURE eligibility criteria

## Graduate Students

- Must currently be enrolled in a PhD or equivalent graduate program

## Postdoctoral Fellows

- Must have a PhD, MD, or equivalent by proposed iCURE start time
- No more than 5yrs of relevant research experience

# Apply to iCURE – Application Process

- Review eligibility criteria on the [iCURE Website](#)
- An [eRA Commons ID](#) is required to apply.
- If you don't have one, please contact [iCURE@nih.gov](mailto:iCURE@nih.gov)
- Login to iCURE Management System (<https://ims.nci.nih.gov/>) using your eRA Commons Username (ID) and Password to apply

Heidi Lissel Loggoff

**NIH** NATIONAL CANCER INSTITUTE

Apply to be an iCURE Scholar

Thank you for your interest in the iCURE program

**iCURE Eligibility**

iCURE scholars must be a citizen or non-citizen national of the United States or an individual who has been lawfully admitted for permanent residence in the United States.

Select the career level below that you are applying for:

**Post-Baccalaureate (Including Post-Master's) Individuals**

Post-baccalaureate (including post-master's) individuals must meet **both** the Postbaccalaureate (RTA Program) and the iCURE program eligibility criteria.

iCURE post-baccalaureate research experience awards will be for one year.

OMB No.: 0925-0761  
Expiration Date: 07/31/2022  
Collection of this information is authorized by The Public Health Service Act, Section 411 (42 USC 265a). Rights of study participants are protected by The Privacy Act of 1974. Participation is voluntary, and there are no penalties for not participating or withdrawing from the study at any time. Refusal to participate will not affect your benefits in any way. The information collected in this study will be kept private to the extent provided by law. Names and other identifiers will not appear in any report of the study. Information provided will be combined for all study participants and reported as summaries. You are being asked to complete this form so that we can process your application for the Intramural Continuing Opportunities (iCURE) program.

Public reporting burden for the collection of information is estimated to average 30 minutes per response, including the time for reviewing instructions, searching existing data sources, gathering and maintaining the data needed, and completing and reviewing the collection of information. An agency may not conduct or sponsor, and a person is not required to respond to, a collection of information unless it displays a currently valid OMB control number. Send comments regarding this burden estimate or any other aspect of this collection of information, including suggestions for reducing this burden to: NIH, Project Clearance Branch, 6705 Rockledge Drive, MSC 7074, Bethesda, MD 20892-7074, ATTN: PRA (0925-0761). Do not return the completed form to this address.

Apply

**Graduate Students**

Graduate students must currently be enrolled in a PhD or equivalent graduate program.

iCURE graduate student research experience awards will be for two years.

OMB No.: 0925-0761  
Expiration Date: 07/31/2022  
Collection of this information is authorized by The Public Health Service Act, Section 411 (42 USC 265a). Rights of study participants are protected by The Privacy Act of 1974. Participation is voluntary, and there are no penalties for not participating or withdrawing from the study at any time. Refusal to participate will not affect your benefits in any way. The information collected in this study will be kept private to the extent provided by law. Names and other identifiers will not appear in any report of the study. Information provided will be combined for all study participants and reported as summaries. You are being asked to complete this form so that we can process your application for the Intramural Continuing Opportunities (iCURE) program.

Public reporting burden for the collection of information is estimated to average 120 minutes per response, including the time for reviewing instructions, searching existing data sources, gathering and maintaining the data needed, and completing and reviewing the collection of information. An agency may not conduct or sponsor, and a person is not required to respond to, a collection of information unless it displays a currently valid OMB control number. Send comments regarding this burden estimate or any other aspect of this collection of information, including suggestions for reducing this burden to: NIH, Project Clearance Branch, 6705 Rockledge Drive, MSC 7074, Bethesda, MD 20892-7074, ATTN: PRA (0925-0761). Do not return the completed form to this address.

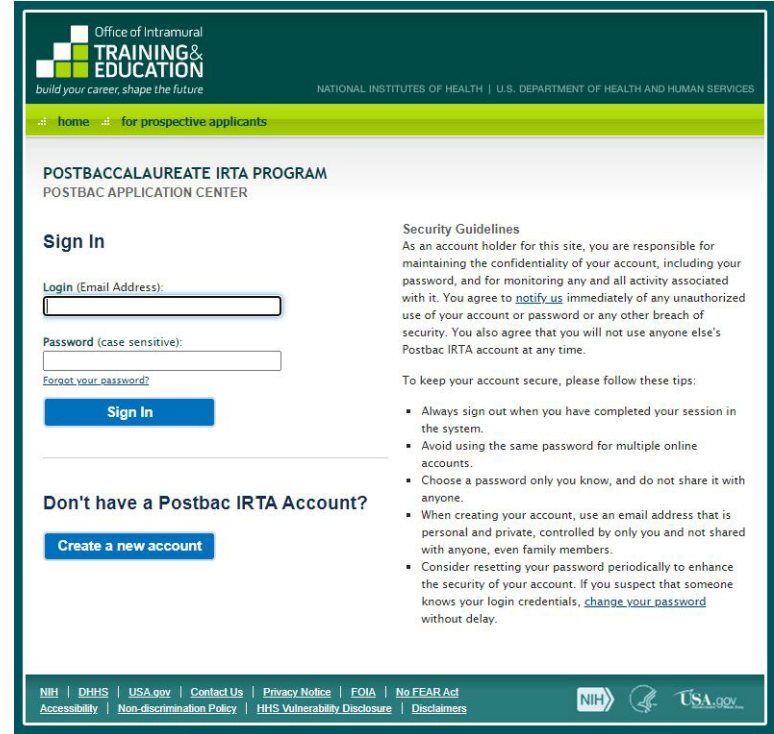
Apply

**Postdoctoral Candidates**

# \*\*Application Process for Postbacs

Post-baccalaureate (including post-masters) individuals must submit an application to the Postbaccalaureate IRTA Program Application Center (<https://www2.training.nih.gov/apps/publicform/s/pbt/forms/login.aspx>). Refer to the [website](#) to set up a Postbac IRTA Account to get started with your application.

**AND THEN** Submit an application to the iCURE Management System (<https://ims.nci.nih.gov/>)



Office of Intramural  
**TRAINING & EDUCATION**  
build your career, shape the future

NATIONAL INSTITUTES OF HEALTH | U.S. DEPARTMENT OF HEALTH AND HUMAN SERVICES

home for prospective applicants

### POSTBACCALAUREATE IRTA PROGRAM POSTBAC APPLICATION CENTER

#### Sign In

Login (Email Address):

Password (case sensitive):

[Forgot your password?](#)

**Sign In**

#### Don't have a Postbac IRTA Account?

**Create a new account**

#### Security Guidelines

As an account holder for this site, you are responsible for maintaining the confidentiality of your account, including your password, and for monitoring any and all activity associated with it. You agree to [notify us](#) immediately of any unauthorized use of your account or password or any other breach of security. You also agree that you will not use anyone else's Postbac IRTA account at any time.

To keep your account secure, please follow these tips:

- Always sign out when you have completed your session in the system.
- Avoid using the same password for multiple online accounts.
- Choose a password only you know, and do not share it with anyone.
- When creating your account, use an email address that is personal and private, controlled by only you and not shared with anyone, even family members.
- Consider resetting your password periodically to enhance the security of your account. If you suspect that someone knows your login credentials, [change your password](#) without delay.

NIH | DHHS | USA.gov | Contact Us | Privacy Notice | FOIA | No FEAR Act  
Accessibility | Non-discrimination Policy | HHS Vulnerability Disclosure | Disclaimers

NIH USA.gov

# Apply to iCURE – Application Information



- Contact Information: Name, Email
- Citizenship
- \*Gender, \*Race, \*Ethnicity, \*Demographics, \*Disability Status. \*This information IS NOT used to make funding decisions or assess applicant eligibility; all fields are voluntary
- Immediate Career Goals: In the next 2-3 years what do you expect to accomplish; how will training at NCI help you with your immediate career goals) 500 words maximum
- Long-term Career Goals: Where do you see your career in 5-10 years?; How will being an iCURE scholar help you fulfill your goals>) 500 words maximum
- Current Intramural NIH and/or NCI funding support
- Academic History
  - Current/most recent institution with GPA
- Anticipated graduation date (if applicable)
- Master's GPA (if applicable)
- Undergraduate GPA (Graduate Students)
- Additional Information: Are there any gaps or challenges in your application that you want to acknowledge?

# Apply to iCURE – Application Information



- Contact information for three references:
  - *For post-baccalaureate candidates, this information will be collected as part of the [Postbaccalaureate IRTA Program Application](#).*
  - References will be contacted directly by program
    - Graduate student and Postdoc applicants are **required** to include their dissertation PI as one of their references
  - Friendly reminder – it’s always a good idea to communicate with your references before listing them (ask if they will be able to provide a positive reference for you)





# Apply to iCURE – Application Uploads

- Post-baccalaureate (including post-masters) individuals – PDF version of your *Postbaccalaureate IRTA Program Application*
- Graduate students and postdoctoral fellows:
  - **Curriculum Vitae (CV):** include your academic history and research experience as well as any publications, grant applications/awards, honors, and professional experience, including any service on scientific and/or peer review boards or sessions.
  - **Transcript:** A copy of your most recent transcript is required.



# Apply to iCURE – Application Process

- Review eligibility criteria on the [iCURE Website](#)
- An [eRA Commons ID](#) is required to apply.
  - If you don't have one, please contact [iCURE@nih.gov](mailto:iCURE@nih.gov)
- Login to iCURE Management System (<https://ims.nci.nih.gov/>) using your eRA Commons Username (ID) and Password to apply
- Application components: Contact info, CV, Responses to prompts (short- and long-term career goals)

# 2023 Timeline and Contact Information



**Applications must be submitted by December 6, 2023**

## Application Timeline



Contact the team by emailing: [iCURE@nih.gov](mailto:iCURE@nih.gov)

Webpage: <https://www.cancer.gov/about-nci/organization/crchd/diversity-training/icure>

iCURE Management System: <https://ims.nci.nih.gov/>



*Thank You.*  
*QUESTIONS?*

Contact: *iCURE@nih.gov*



**NATIONAL  
CANCER  
INSTITUTE**

[www.cancer.gov](http://www.cancer.gov)

[www.cancer.gov/espanol](http://www.cancer.gov/espanol)